



# Fincantieri Marine Group Overview

*WCPA Annual Meeting*

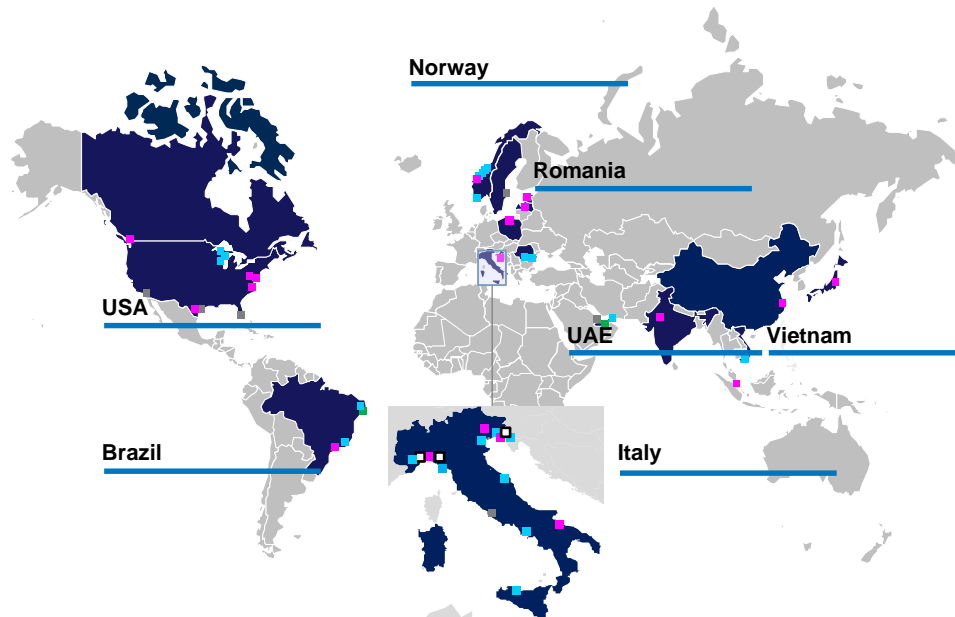
*September 16<sup>th</sup>, 2022*

# Fincantieri at a Glance – Global Network

#1 Western Designer & Shipbuilder  
230+ years of history, more than 7,000 ships built

~ 106 ships currently in  
backlog and soft backlog

18 shipyards

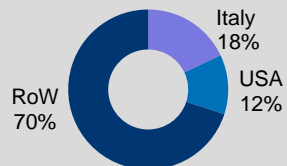


4 continents

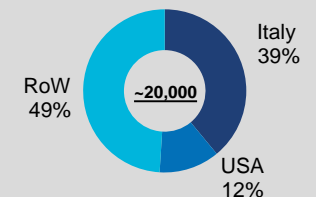
~ 8,000 employees in Italy  
~ 20,000 employees Total

~ 80,000 subcontractors

## Revenues by geography

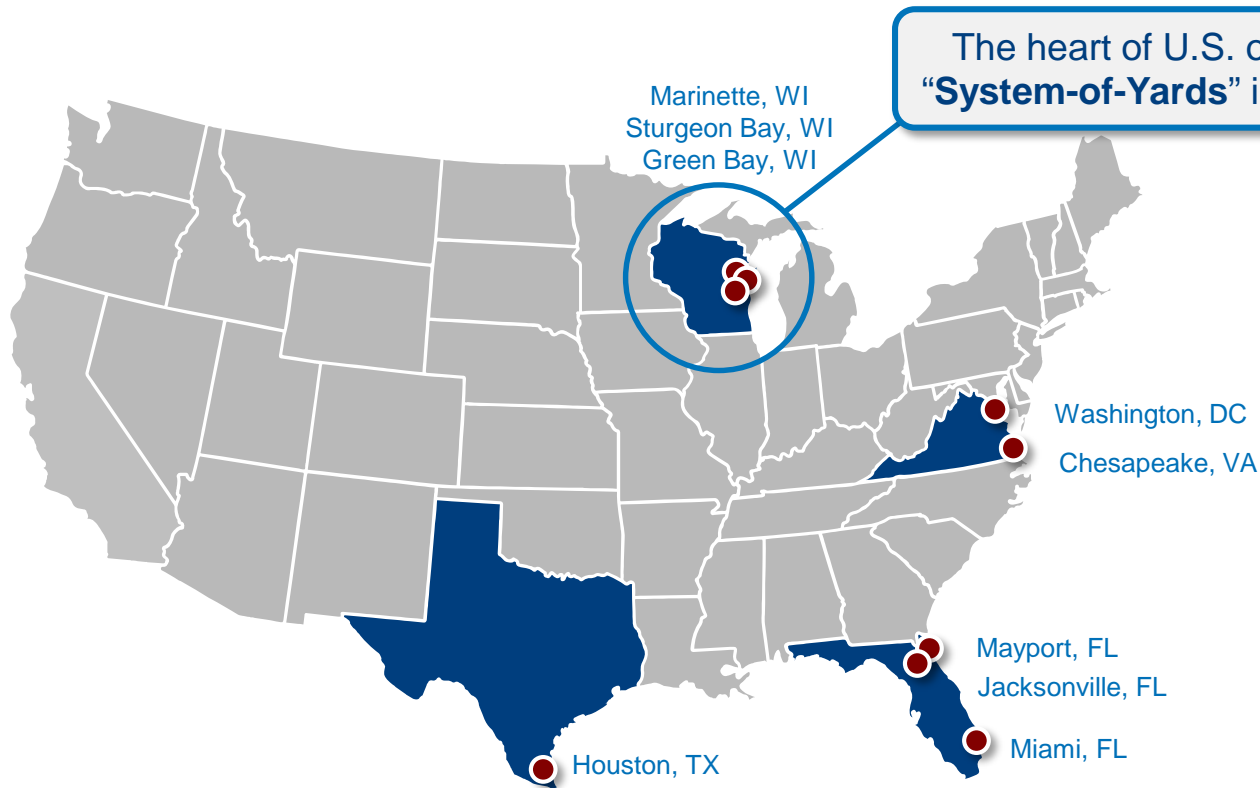


## Employees by location



# Fincantieri Marine Group (FMG) Overview

Fincantieri invested \$.5B+ since acquiring Wisconsin Shipyards in 2009



● Fincantieri facilities or affiliations

**Military**  
**Government**  
**Commercial**

**Construction**  
**Design**  
**Repair**  
**Sustainment**

**~2,000 employees**  
**42-state supply chain**  
**28,000+ indirect jobs**

# FMG Leverages Distributed Production

Fincantieri Marinette Marine • Marinette, Wisconsin



Designated as Federal Marine Highway Project by DOT Secretary Buttigieg in August 2021.

Project was Sponsored by City of Sturgeon Bay

Fincantieri's unique **System of Yards** concept allows for complete integration of manpower resources, best practices, and streamlined manufacturing processes adopted from Fincantieri shipyards around the globe

Fincantieri Bay Shipbuilding • Sturgeon Bay, Wisconsin



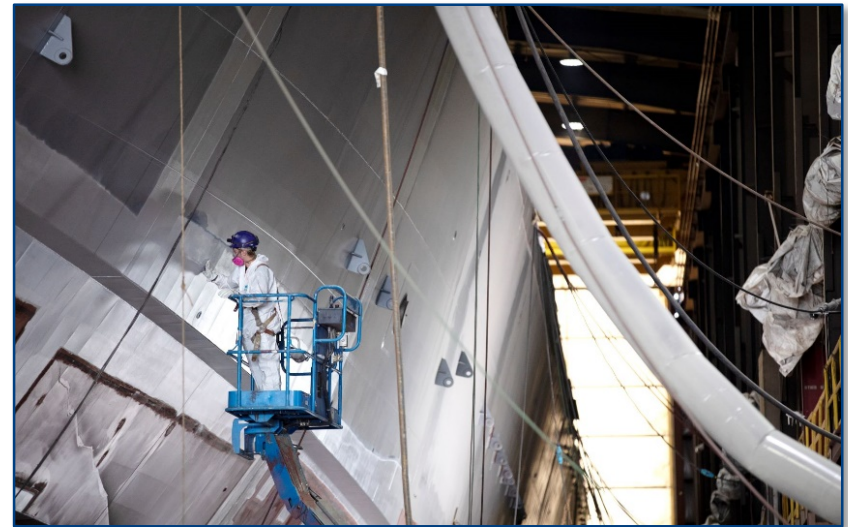
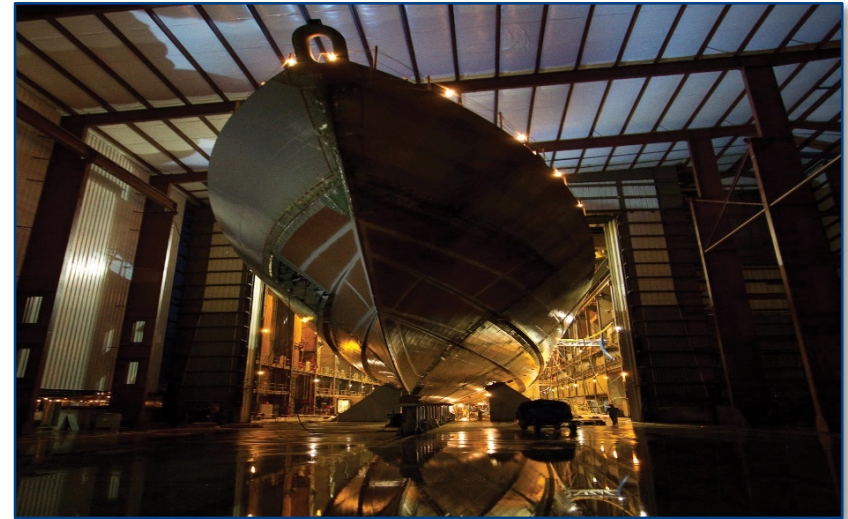
Fincantieri ACE Marine • Green Bay, Wisconsin

- 5,429,000 sq ft of shipyard space
- 1,000,000 sq ft climate-controlled manufacturing facilities
- 9,769 linear ft of pier space
- Graving dock of 1,150 x 140 ft
- 430 x 120 ft—4,540 LT capacity drydock
- 220 x 120 ft—1,270 LT capacity drydock
- U.S. Navy certified floating drydock for small surface combatants
- 3 sites



# Fincantieri Marinette Marine (FMM)

- Founded 1942 – Built more than 1500 vessels
- **Strong government portfolio** for US Coast Guard and US Navy including icebreakers, buoy tenders, research vessels, small surface combatants & frigates
- **Leaders in engineering** for concept, functional and detail design, with successful design studies for US Coast Guard and US Navy, including icebreakers, patrol cutters, frigates, unmanned surface vehicles



# FMM Program Portfolio

## SURFACE COMBATANTS

### Littoral Combat Ship (Freedom-Class) LCS

- Completed 12 of 16
- Four at various stages of construction
- Final LCS slated for delivery in 2023



### Multi-Mission Surface Combatant (MMSC)

- Four ships for Navy
- Foreign Military Sales to Saudi Arabia
- Construction of all MMSC's are underway
- Final MMSC slated for delivery in 2027



### Constellation-Class Frigate (FFG 62)

- FFG-62 to start construction this year
- Deliver lead ship in 2026—FFG-62
- FFG-63 and FFG-64 awarded
- Options for seven additional ships





# FMM Facilities

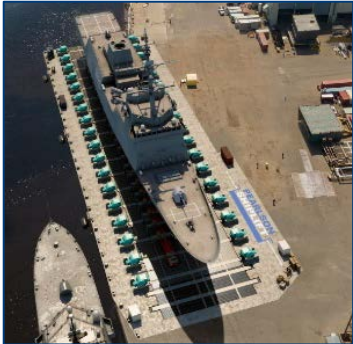
## NEW

1

### SHIP LIFT

Winches to raise/lower FFG-62

*Construction Started:*  
*June 20*



2

### BLDG 20

FFG Blast and Paint booths (2 each)

*Construction Starts:*  
*May 22*

3

### BLDG 30 (Expansion) / Panel Line

Steel cutting, welding and staging  
30,000 sq/ft

*Construction Complete:*  
*January 22*



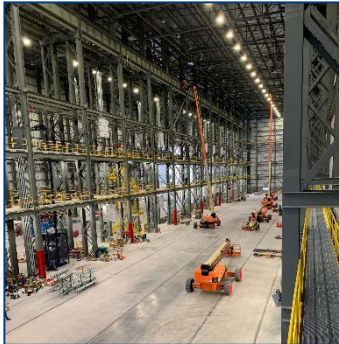
4

### BLDG 34 (New)

FFG Hull Erection

190,000 sq/ft

*Construction Started:*  
*January 21*



## EXISTING

A

BLDG 30 (82K SF)  
Panel Fabrication

C

BLDG 21/22 (72K SF)  
Pipe and Sheet Metal Shops  
Steel Module Construction

E

BLDG 32 (49K SF)  
Module Cold Outfitting

B

BLDG 33 (28K SF)  
Grand Module Construction

D

BLDG 31 (53K SF)  
Blast and Paint

F

BLDG 10 (112K SF)  
Module Cold Outfitting



# FMM Facilities Continued

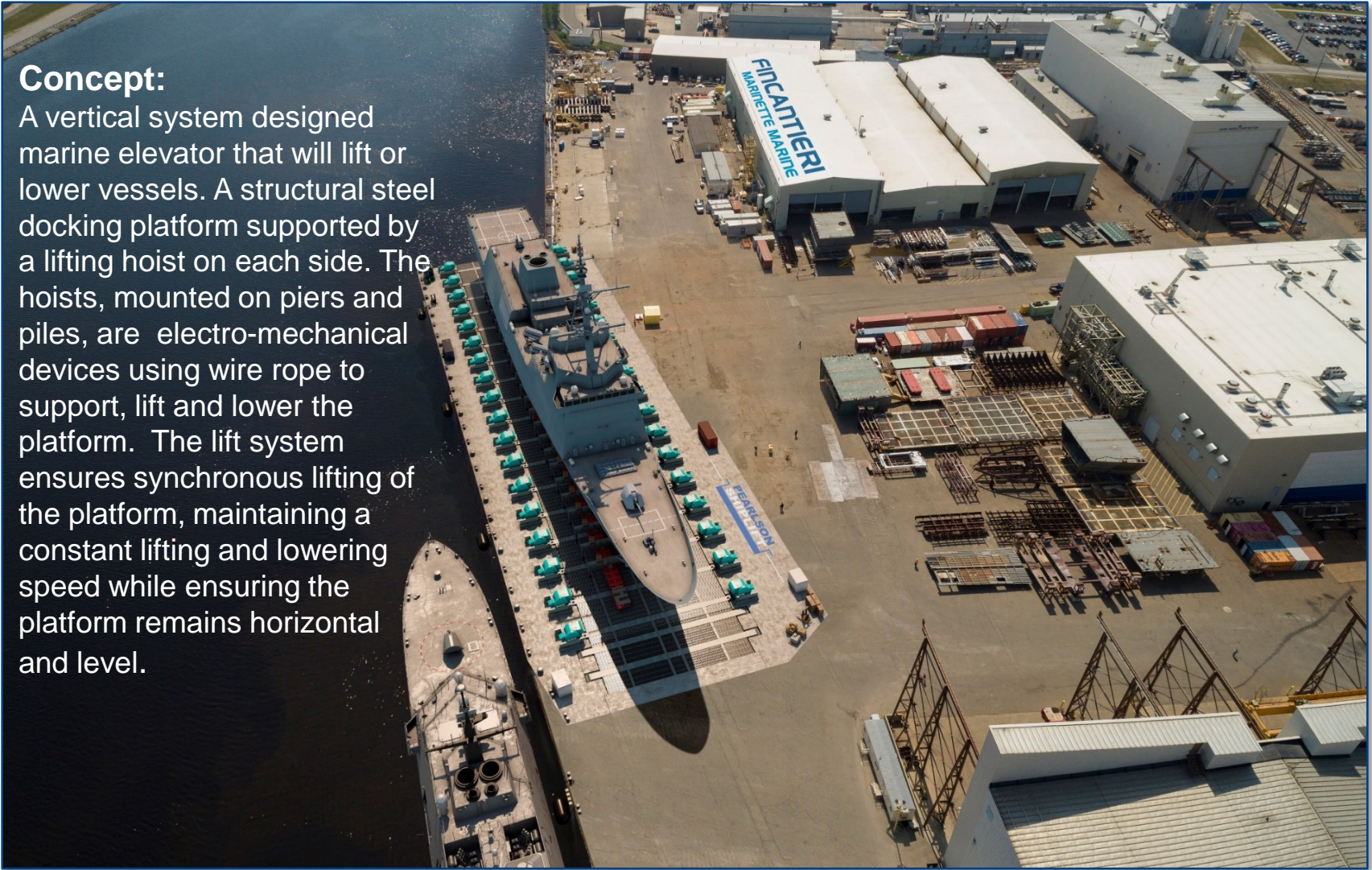




# Synchrolift (Largest in the United States)

## Concept:

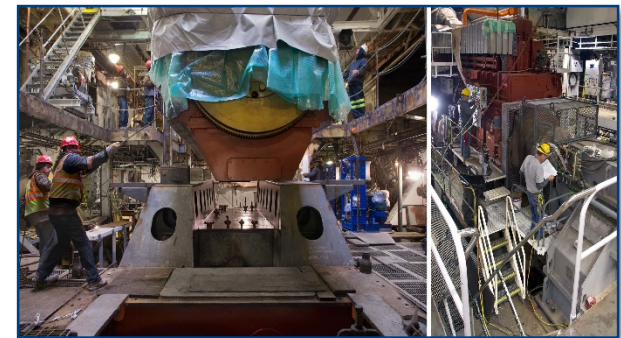
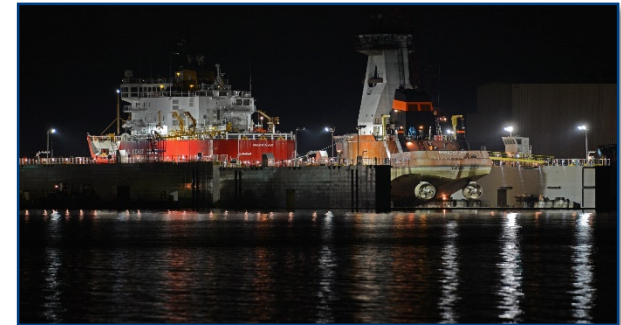
A vertical system designed marine elevator that will lift or lower vessels. A structural steel docking platform supported by a lifting hoist on each side. The hoists, mounted on piers and piles, are electro-mechanical devices using wire rope to support, lift and lower the platform. The lift system ensures synchronous lifting of the platform, maintaining a constant lifting and lowering speed while ensuring the platform remains horizontal and level.





# Fincantieri Bay Shipbuilding (FBS)

- Founded in 1902 in Manitowoc, WI
- Relocated to Sturgeon Bay, WI in 1968.
- Four key Business Segments
  - **New construction, primarily commercial vessels**, incl. Offshore Support Vessels (OSV), Articulated Tug and Barge units (ATB), Ferries, Dredges, Cargo Ships, Fishing Vessels and Self-Unloading Bulk carriers.
  - **Repair of commercial** (domestic and foreign flagged) **and Government vessels** (US Coast Guard and Army Corp of Engineers).
  - **LCS/MMSC/FFG Module Construction** Support to FMM
  - **Major conversions** of commercial vessels including repowering projects and the installation of scrubbers.



# FBS Commercial New Construction Order Book

## ➤ 639' Great Lakes Self-Unloading Bulk Carrier

- M/V Mark Barker delivered July 22, 2022
- Dry bulk or break bulk cargo hatch design
- First new build for Interlake in over 35 years





# FBS Commercial New Construction Order Book

## ➤ 12,000 m<sup>3</sup> Liquefied Natural Gas (LNG) Bunker Barge

- Crowley delivers Q4-2023
- Crowley contract is with Royal Dutch Shell
- Will be operating in Port of Savannah
- Largest LNG Bunkering Barge in the US



# FBS Commercial New Construction Order Book

- 5,500 m<sup>3</sup> – Liquefied Natural Gas (LNG) Bunker Barge
  - Delivers Q4-2023
  - Sister vessel to the Clean Canaveral (delivered Dec 2022)
  - Significant potential for a third of the class



*Clean Canaveral in Jacksonville, Fl.*





# FBS New Construction Opportunities

## Commercial:

- LNG Bunker Barges (and ships?)
  - Strong market for more barges and potential for ships
- Wind Farm Support Vessels
  - Significant market opportunity (10+)
  - Immediate opportunity
    - 289', 80-Person Service Operating Vessel (SOV)
    - Award Q4 2022, Delivery Q4 2025
- Continued focus on traditional barges
  - 100,000 BBL Asphalt ATB (Tug and Barge) – GOM
  - 14,000 ton Cement ATB (Tug and Barge) – Great Lakes



## Government:

- MMSC & FFG (supporting FMM)
- USCG
  - 2nd Great Lakes Icebreaker
- USN/USMC
  - Large Unmanned Surface Vessel (LUSV)
  - Large Amphibious Warship (LAW)
  - T-ARC – Cable Layer





# FBS Repair Business

*FBS continues to maintain a vital role in servicing the Great Lakes fleet*

## Winter Fleet 2022 roster (17 total)

- (2) 1000' Great Lakes Bulk Carriers
- (7) Ore/Stone Self-Unloaders
- (3) Bulk Carrier Barges
- (4) Tug Boats
- (1) Passenger Ferry

## Winter Fleet 2023 projected roster (15 total)

- **(5) 1000' Great Lakes Bulk Carriers**
- (4) Ore/Stone Self-Unloaders
- (2) Bulk Carrier Barges
- (2) Tug Boats
- (2) Casino vessels



# FBS Facilities

## NEW

1

**BLDG 433 (new)**  
Module and Super (Tandem)  
Construction, and Hull Erection  
  
2 Bays – 12 Workstations  
90,000 sq/ft  
  
**Completed: September 21**

2

**BLDG 420 (addition)**  
Steel processing and  
fabrication for Naval  
Vessels  
  
68,000 sq/ft  
  
**Completed May 21**

### Equipment:

- Blast and Prime Line
- Bending press
- Burn Table
- Conveyor System

3

**BLDG 422 (modify)**  
Install mega door,  
and provide blast  
and paint  
  
**Completed:  
March 21**

4

**BLDG 110 (new)**  
Machine shop  
  
**Start:  
September 22**

## EXISTING

A

**BLDG 420**  
Plate, Cutting, Kitting

B

**BLDG 311**  
Plate cutting forming shop  
rolling / bending, section  
assembly, blast and prime,  
panel line, plasma burning  
table

C

**BLDG 411/451**  
Construct curved panels  
/ small modules

D

**BLDG 101**  
Carpenter and Paint Storage

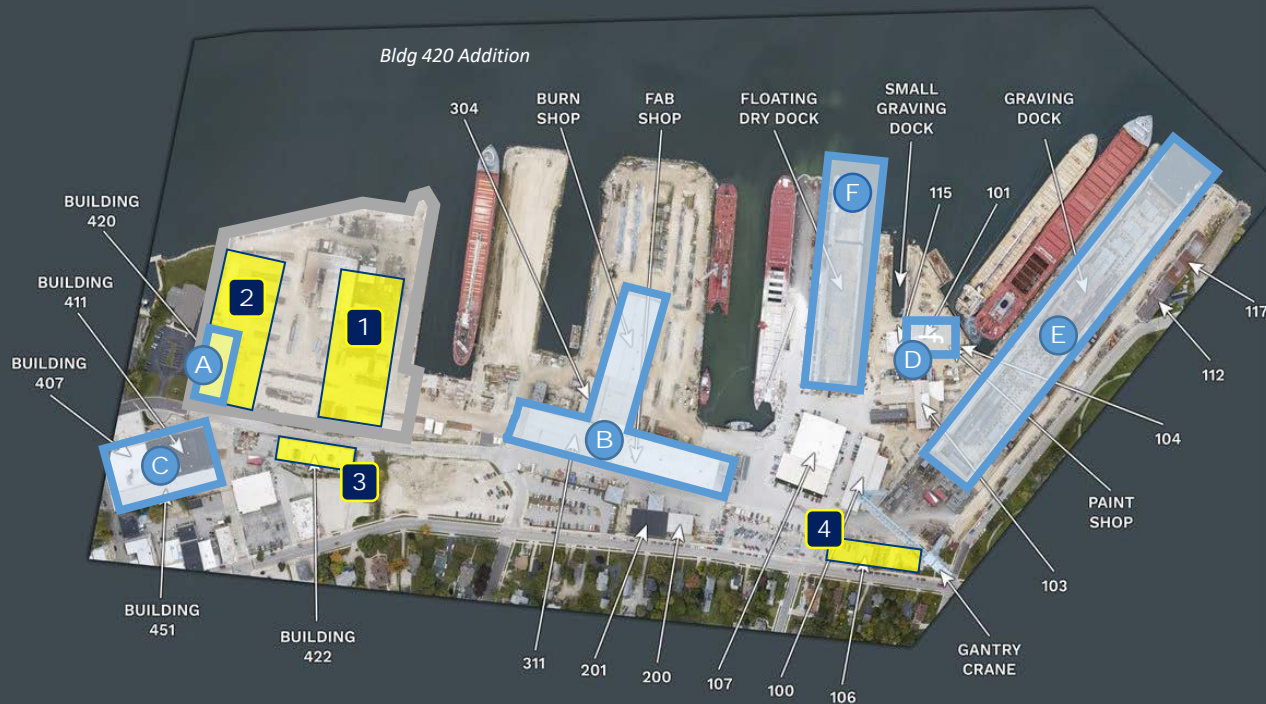
E

**GRAVING DOCK**  
1,150ft x 140ft

F

**FLOATING DRY DOCK**  
654ft x 120ft  
4,540 LT

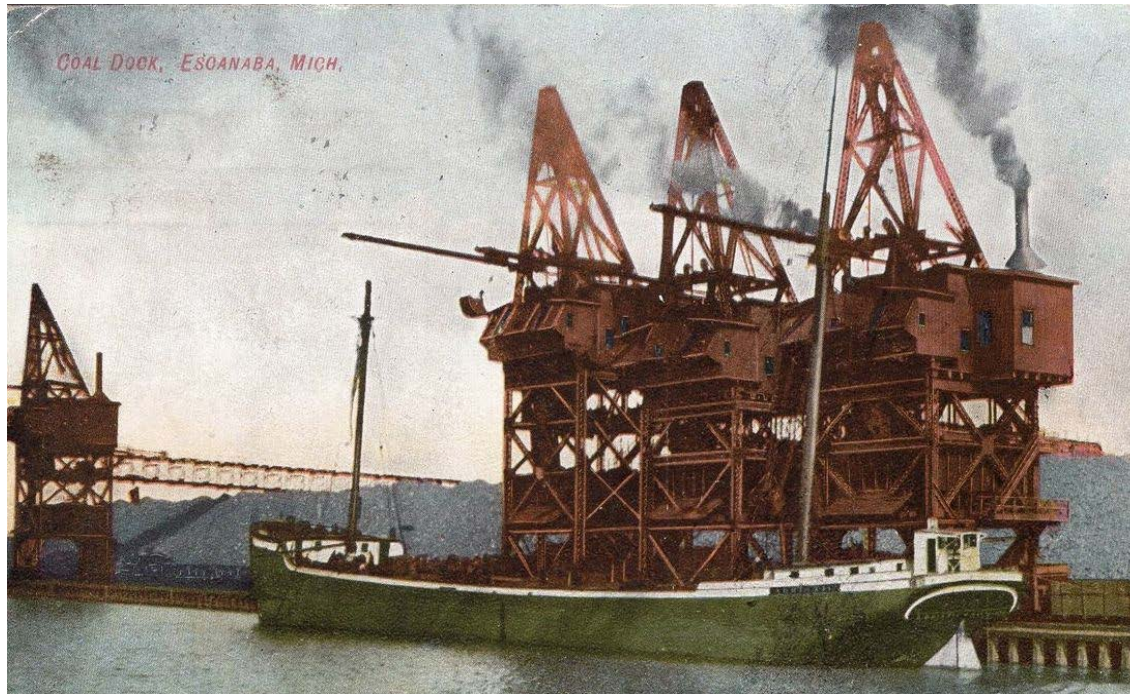
water view





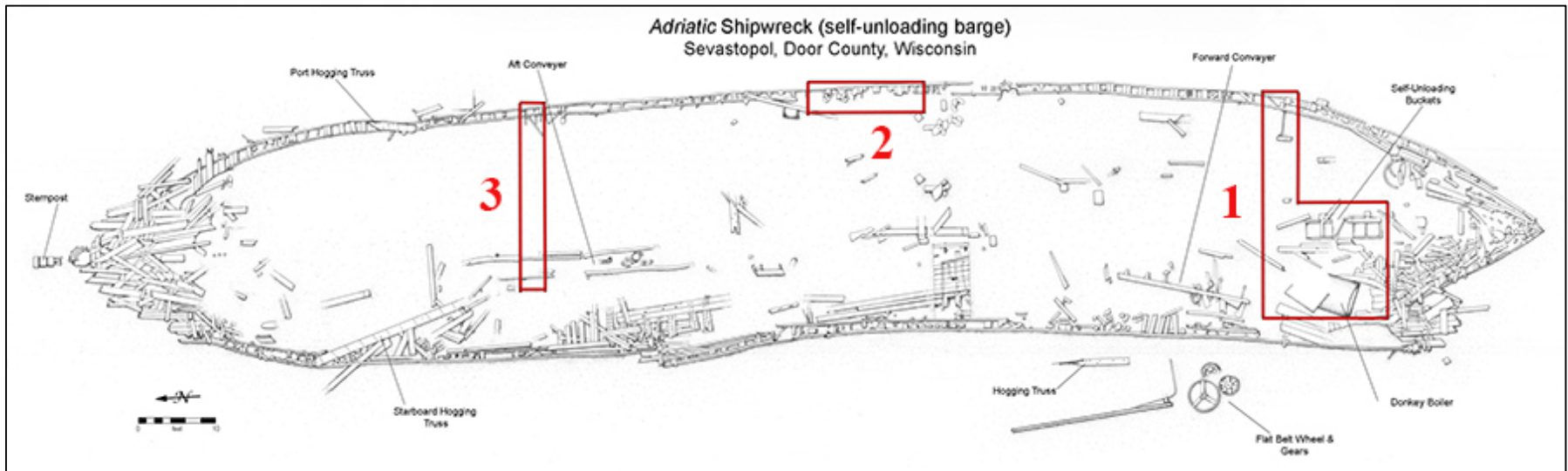
# FBS, HAP Project, and Interesting Finds

- In addition to major CAPEX investments, FMG leverages HAP and other grant funding for yard upgrade projects
- FBS discovered Adriatic while making a dock wall modification while utilizing HAP funding
- Adriatic was a cargo carrier 1889 -1924. Postcard below shows loading coal in Escanaba, Mi
- Ship was excavated and donated to Wisconsin Maritime Museum and will be on exhibit June, 2023



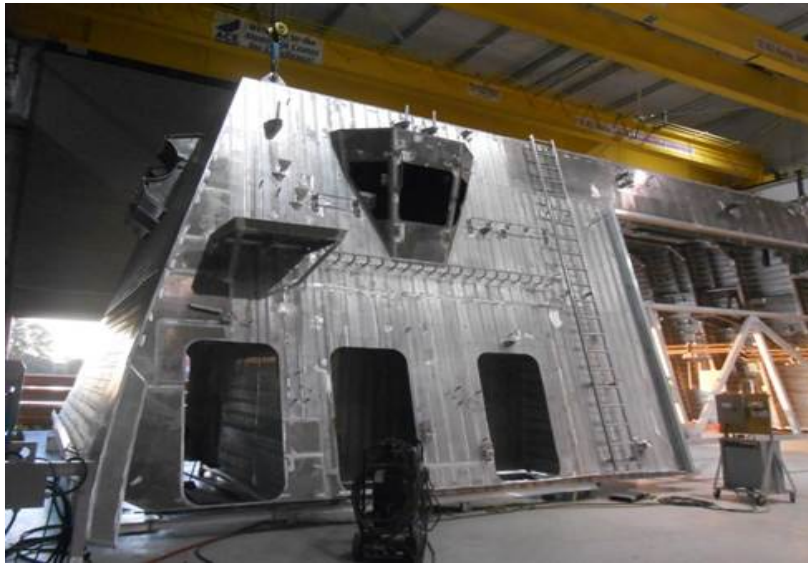


# Additional pictures of Artifact Recovery



# Fincantieri Ace Marine (FAM)

- Founded in 2008 along the Fox River in downtown Green Bay
- State-of-the-art, climate-controlled aluminum construction facility
- Builder of Response Boat-Medium for the United States Coast Guard
- Supplier to FMM for aluminum superstructure modules for LCS and MMSC vessels





# FAM Program Portfolio

## OPTIMAL FOR SMALL BOAT SERIAL PRODUCTION

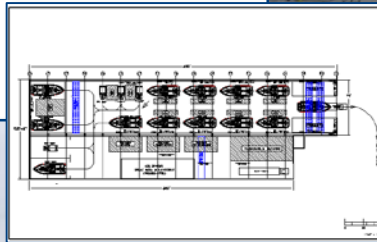
### Response Boat-Medium (RBM) for USCG

- 174 aluminum boats built
- Managed production across two sites
- Peak rate of over 30 boats per year

### Aluminum Construction - Modules

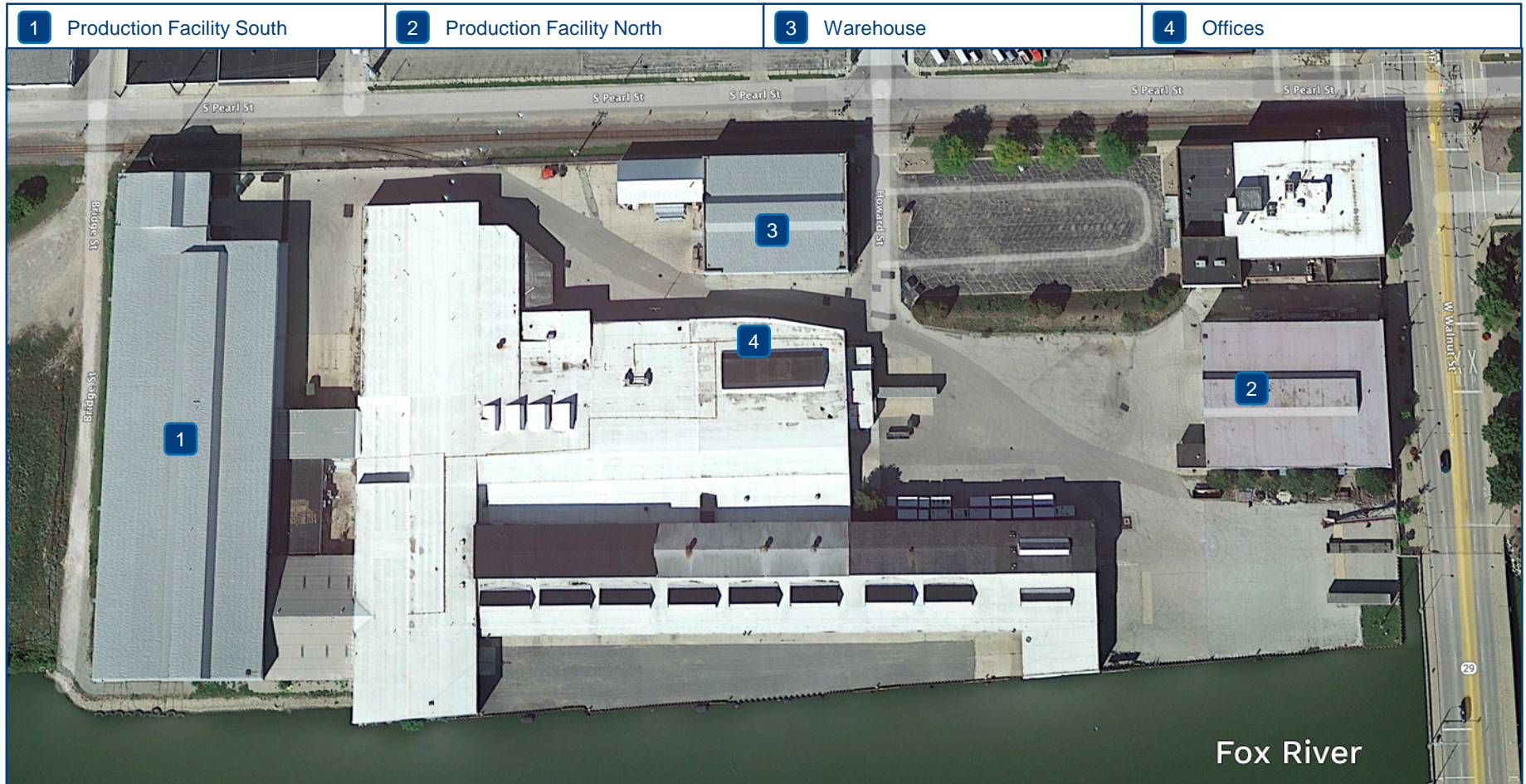
- Building aluminum modules (super-structure) for US Navy programs (LCS, MMSC)
- Mast and other complex structures

View of RB-M serial production for USCG





# FAM Facilities



# Fincantieri's Commitment to Green Excellence

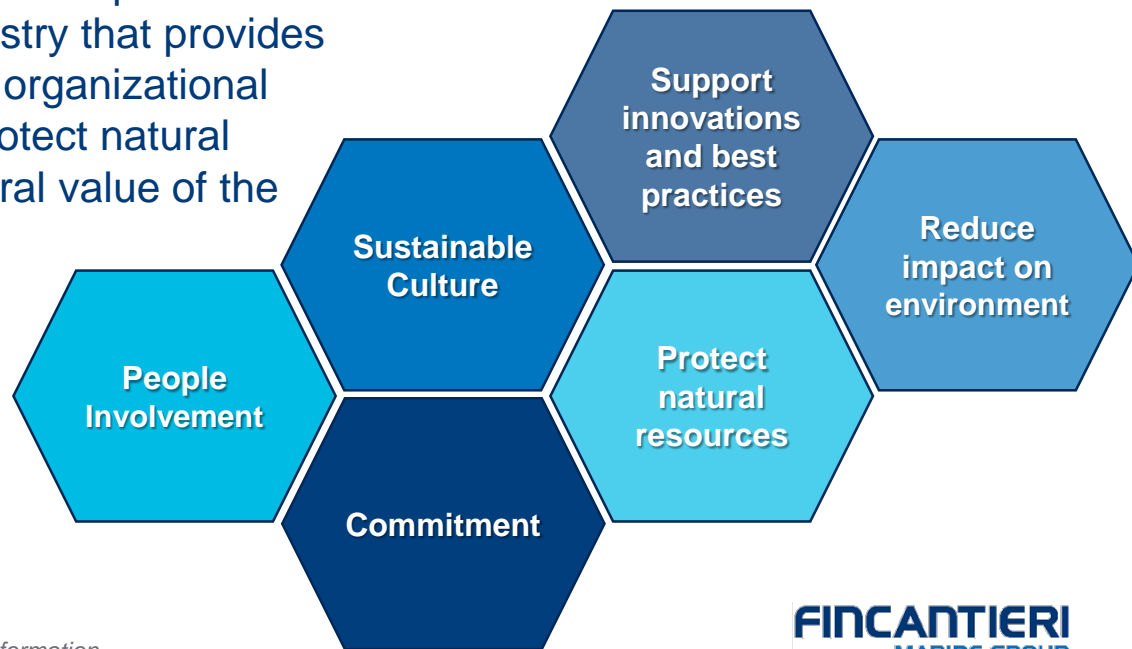
We are committed to achieve environmental green excellence across our enterprise by **taking actions toward a more sustainable environment.**



FMG adopts a bold sustainability plan and strategy – the ***Sustainable Shipyards™*** program. Sustainable Shipyards™ is a brand new program created with the scope to serve as a main driver and common methodology for the implementation of green initiatives and continuous improvement among FMG business units.

Sustainable Shipyards™ is a program unique to FMG and within the U.S. shipbuilding industry that provides a common ground for technological, organizational and cultural solutions designed to protect natural resources and to safeguard the natural value of the areas where we operate.

As part of 2022 initiatives FMM and FAM obtained the Green Marine Certification for their environmental sustainability performance.

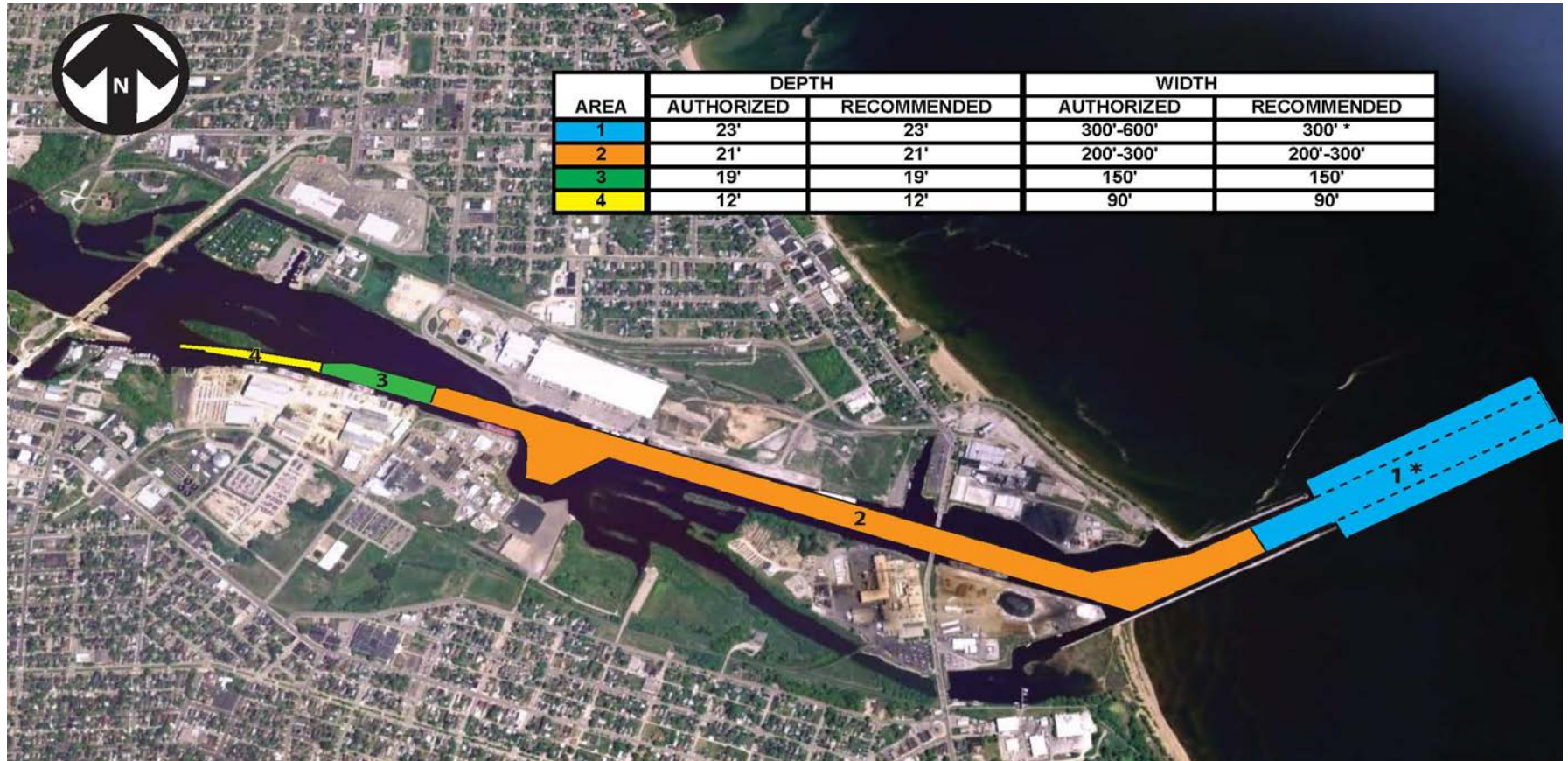




# Additional Initiatives

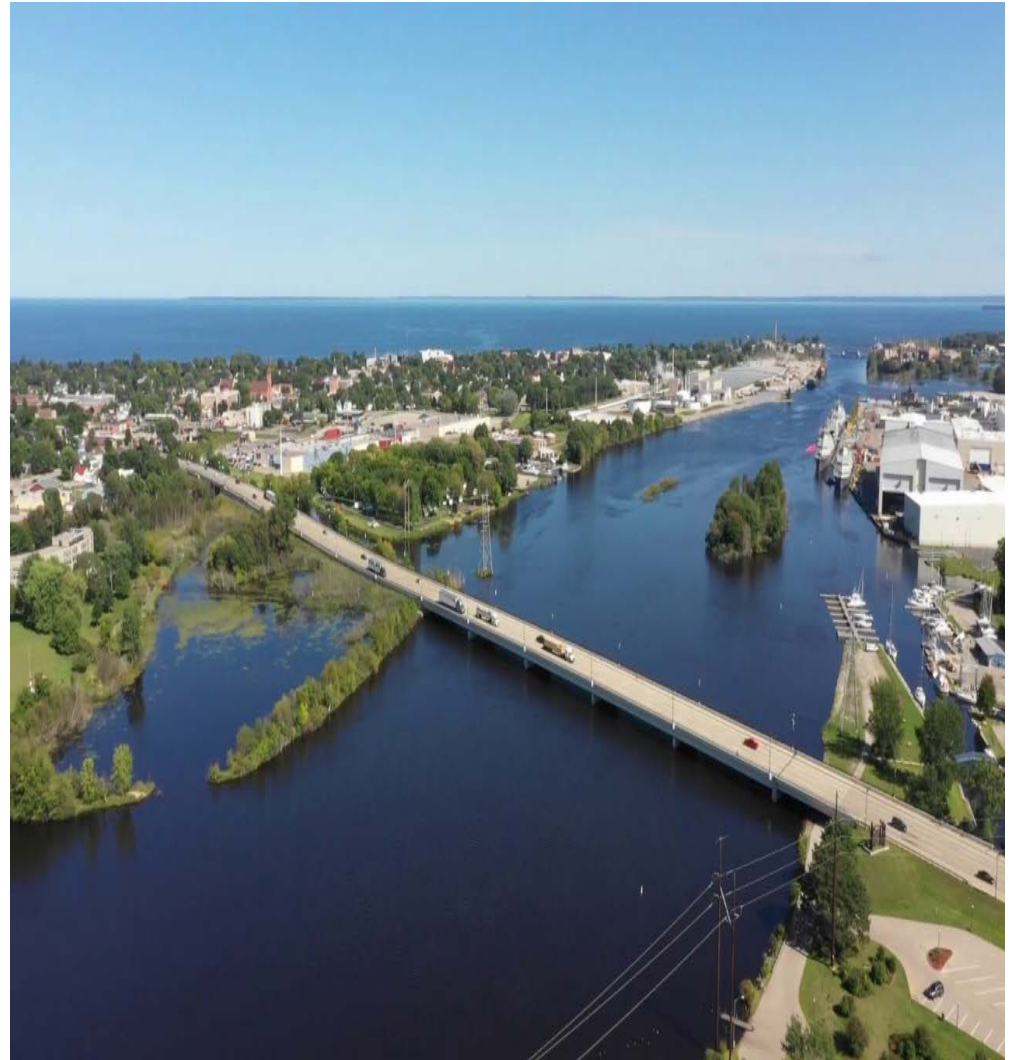
Partnering with City of Menominee, Marinette, and USACE to Deepen Menominee River.

Existing channel depth below:



# Menominee River Deepening Project Status

1. Planning Assistance to States (PAS) Study:
  - Performed with USACE 2021-2022
  - USACE closing out final report
  - Initial feedback appears to reaffirm regional economic benefit, as multiple stakeholders will benefit from project
2. Feasibility study:
  - FY'22: Congress funded \$200k for channel feasibility study – one of only several new starts in the nation, and only one in Great Lakes
  - Project kickoff expected 3Q
  - Senate proposal includes additional FY'23 funding





# Actions Needed

- **HAP:** FMG strongly supports WI HAP program. Funds are usually very small in comparison to rising needs. Request WCPA advocate for increased HAP funding, including issuing a letter of support
- **Marine Highway:** FMG understand the benefits of Great Lakes shipping and is committed to use of the waterways in its own cargo operations. We seek partnership opportunities to support and expand the M90 Transbay Freight Service Marine Highway project to move more cargo between Sturgeon Bay, Marinette and Green Bay.
- **GLIB:** WCPA issue a letter of support for GLIB to be built asap
- **Menominee River Deepening:** FMG seeks WCPA support on this important water infrastructure study