



SUPPORT SERVICES FOR PORT AND MARINE TRANSPORTATION INDUSTRY

Prepared for:



**WISCONSIN
PORTS**

Prepared by:

Todd Polacek

*Service Line Program Manager – Water and
Natural Resources, Great Lakes Region*

16 September 2022



Company Overview

- Founded in 1973
- Headquartered in Hunt Valley, Maryland
 - ♦ 28 offices nationwide
- Full-service environmental, engineering, management and technology consulting firm
- >\$200M annual sales
- Top 200 *ENR* Environmental Firm (10+ years)



- 100% employee-owned, public benefit corporation (PBC)



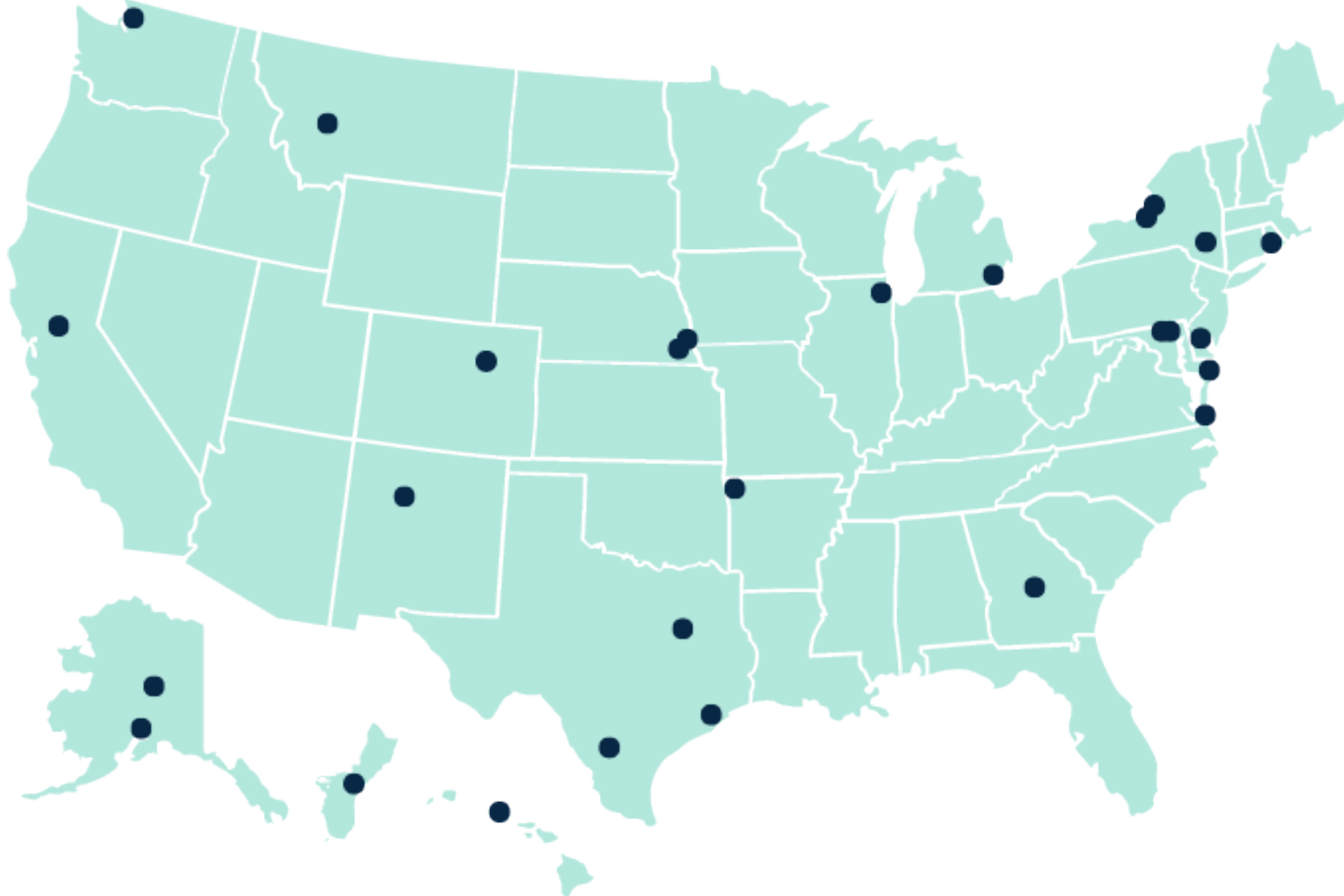
American Association
of Port Authorities



ASSOCIATION OF
PACIFIC PORTS



Nationwide Footprint



EA Experience

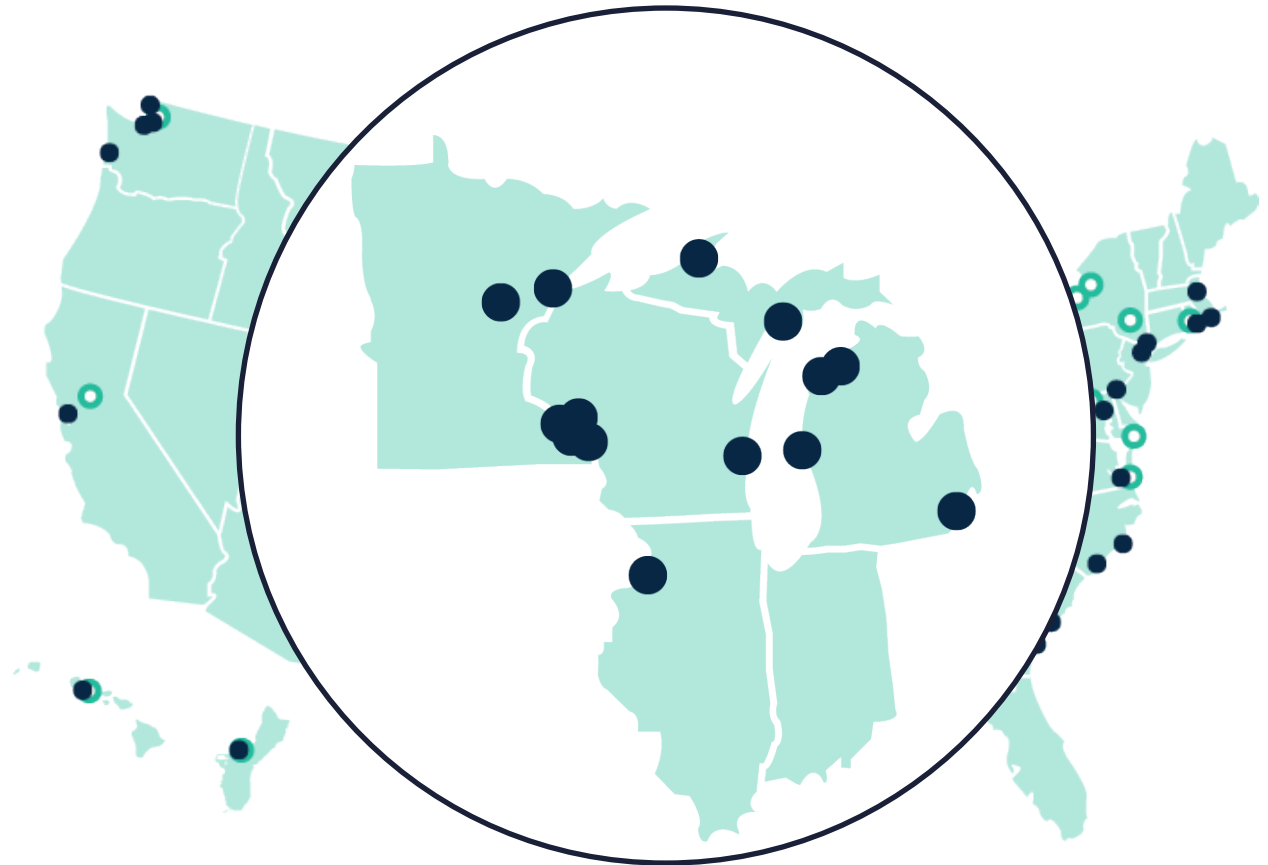
EA provides consulting, planning, engineering and program/construction management services to the port, marine transportation, cargo handling, and freight intermodal industry.

50+

**U.S. and International
Ports and Harbors**

\$41M

**Environmental Services
Across Great Lakes
Watersheds**
\$12M in Wisconsin



Core Services



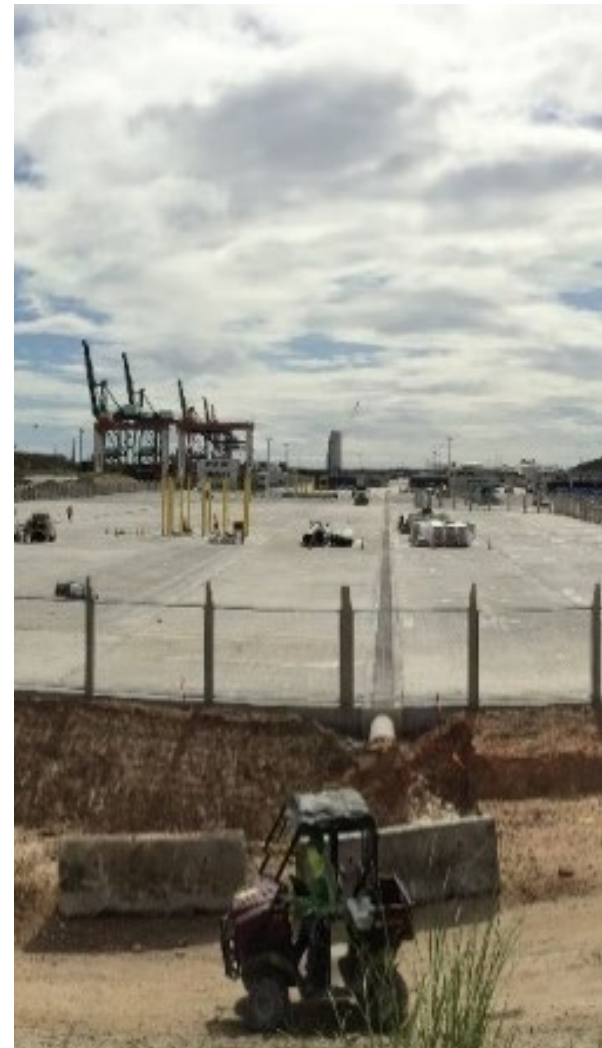
Navigation



Restoration



Operations



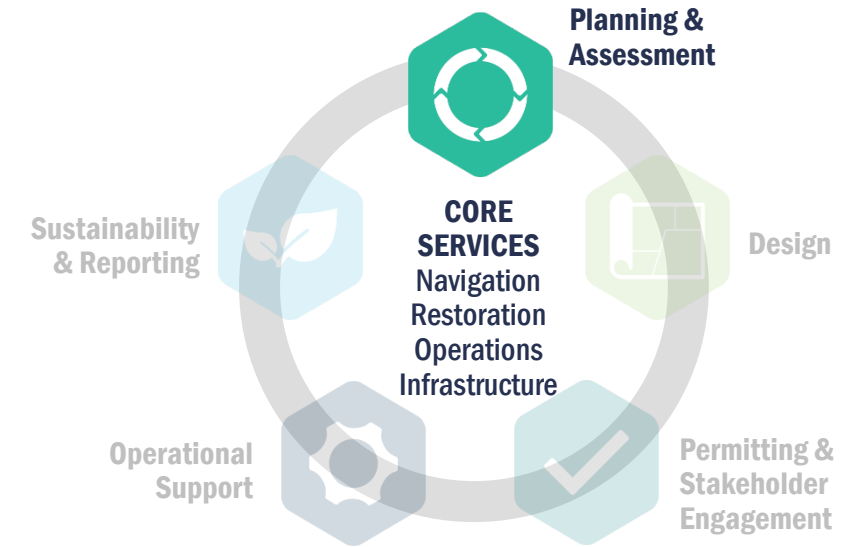
Infrastructure

Technical Expertise



Planning and Assessment

- Natural resources and site surveys
- Feasibility/constraints studies
- Beneficial reuse planning
- Climate change resilience & vulnerability assessments
- Greenhouse gas evaluations





Planning &
Assessment



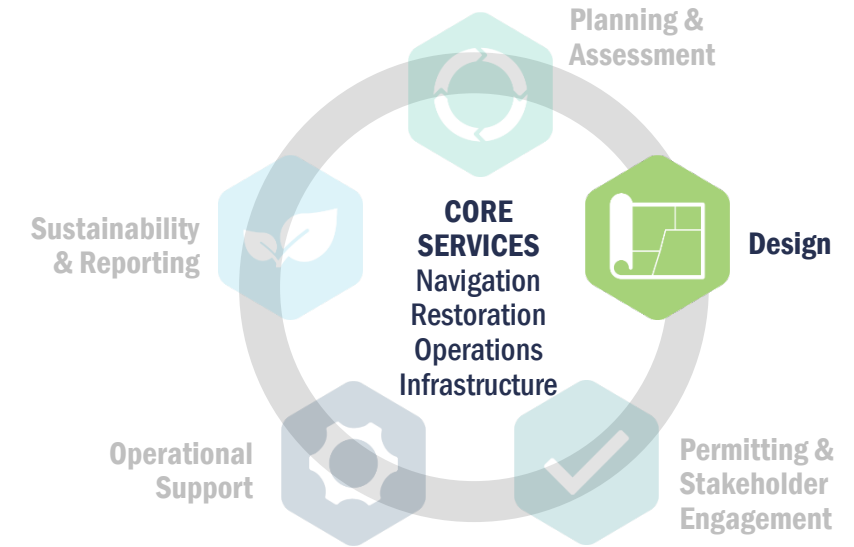
Norfolk Harbor Navigation



Upper Detroit Riverfront Parks Habitat Restoration

Design

- Dredged material containment
- Restoration and remediation
- Facility expansion design, cost estimates and specifications
- Contractor representative services



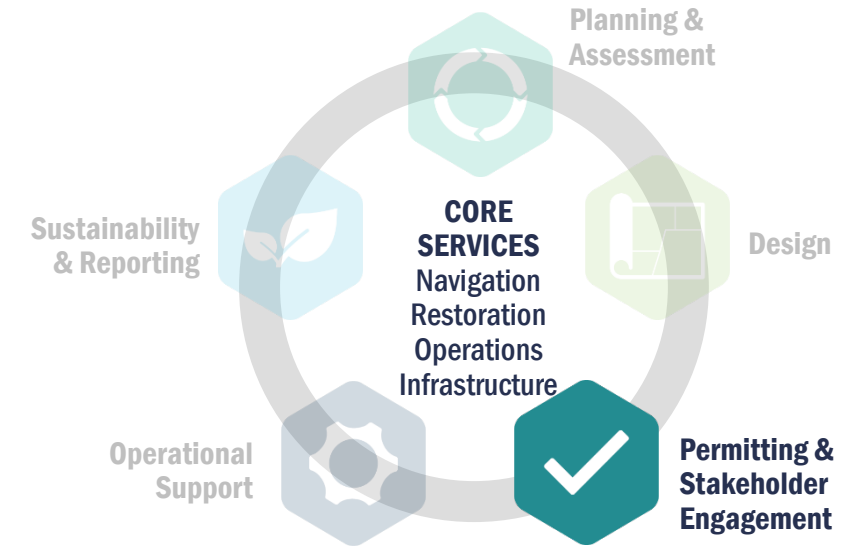
Design



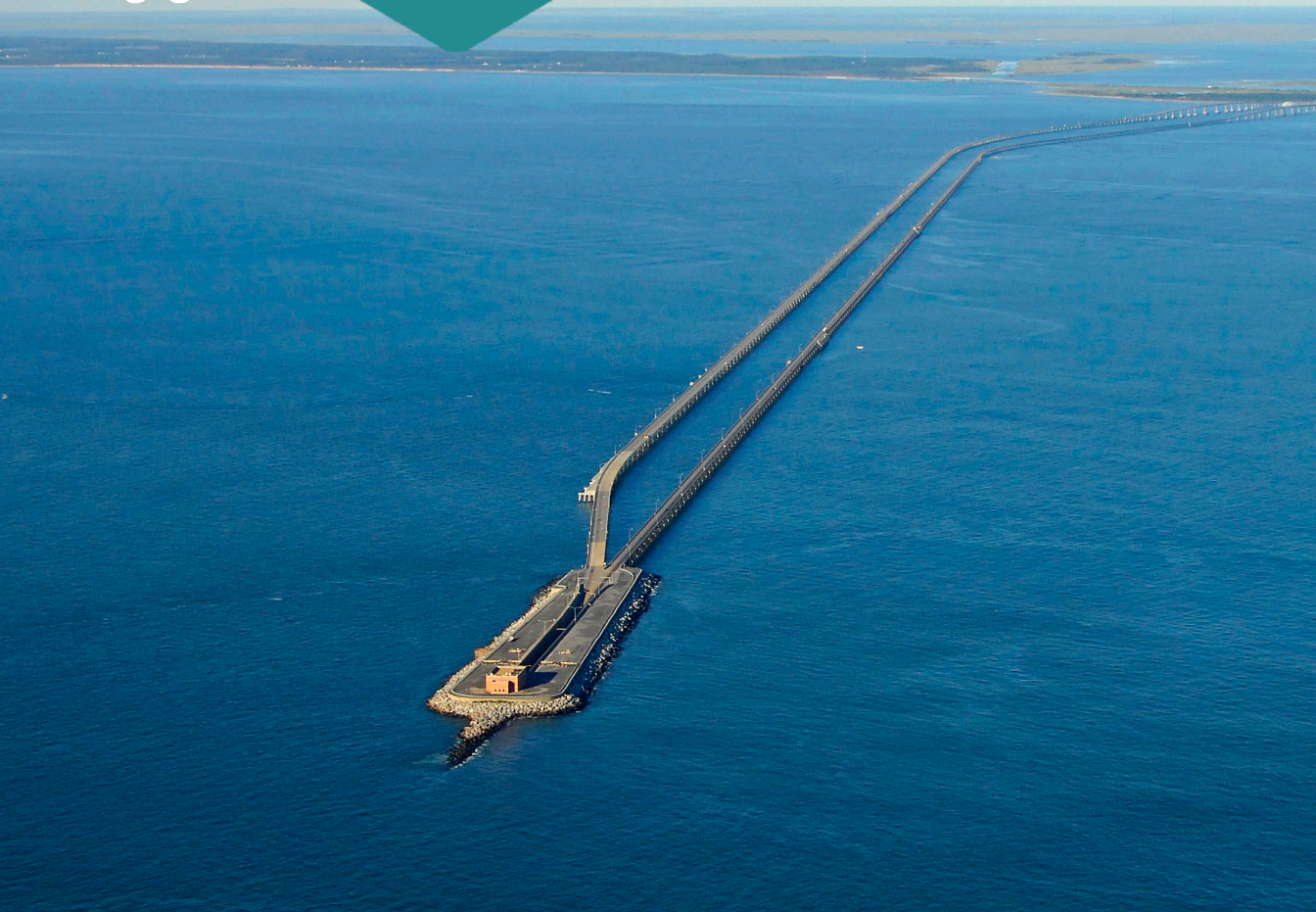
Port of Guam Modernization Program Management

Permitting and Stakeholder Engagement

- Federal and state permitting
- NEPA
- Stakeholder engagement
- Regulatory coordination



Permitting &
Stakeholder
Engagement



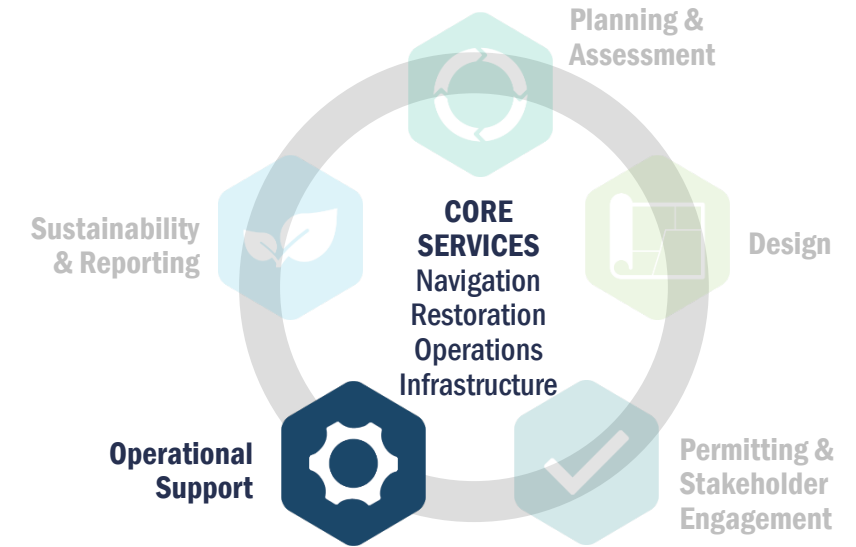
Parallel Thimble Shoal Tunnel Permitting



Norfolk Dredge Material Placement

Operational Support

- Spill, Stormwater & Waste Management Plans
- Inspections
- Data management
- Auditing
- Training





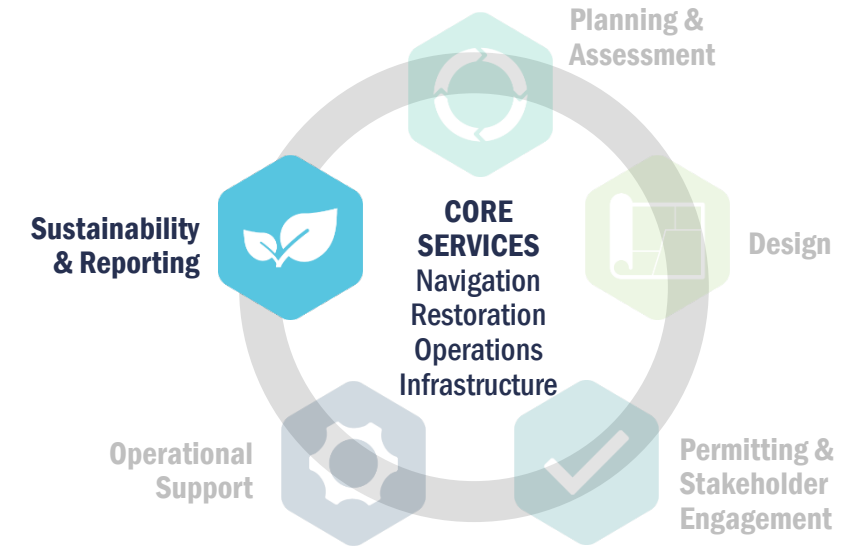
Operational
Support



Port of Seattle Compliance

Sustainability and Reporting

- Climate Action Plans
- Voluntary reporting
- Grants & funding pursuits
- Attestation e.g., verification



Sustainability & Reporting



Port of Providence Green Marine Verification



Port of Seattle Climate and Air Action Plan

Thank You!



Todd Polacek

Service Line Program Manager – Water and
Natural Resources, Great Lakes Region
tpolacek@eaest.com

EA Great Lakes Region Offices

444 Lake Cook Rd, Suite 18
Deerfield, Illinois 60015

5918 Meridian Blvd, Suite 4
Brighton, Michigan 48116

www.eaest.com