

Wisconsin Coastal Management Program

Wisconsin Commercial Ports Association 2021 Annual Meeting

MIKE FRIIS

WISCONSIN COASTAL
MANAGEMENT PROGRAM

DEPARTMENT OF ADMINISTRATION

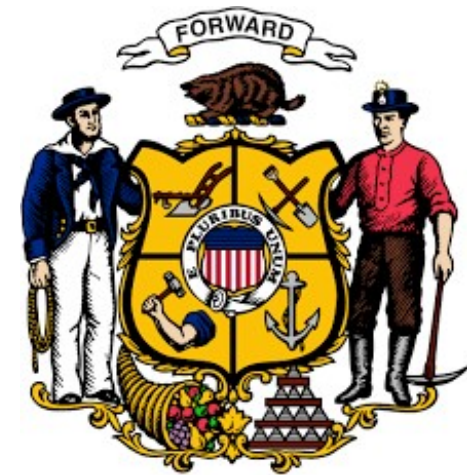
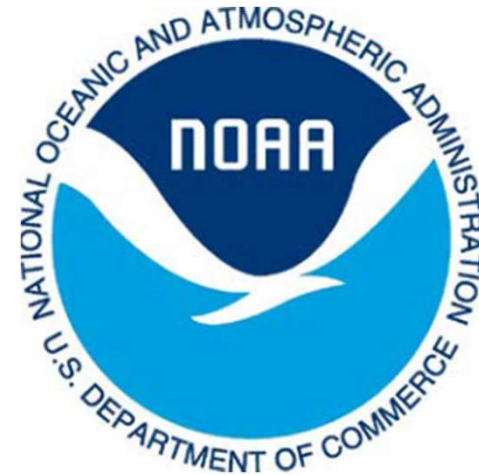
MICHAEL.FRIIS@WISCONSIN.GOV

[HTTP://COASTAL.WISCONSIN.GOV](http://COASTAL.WISCONSIN.GOV)



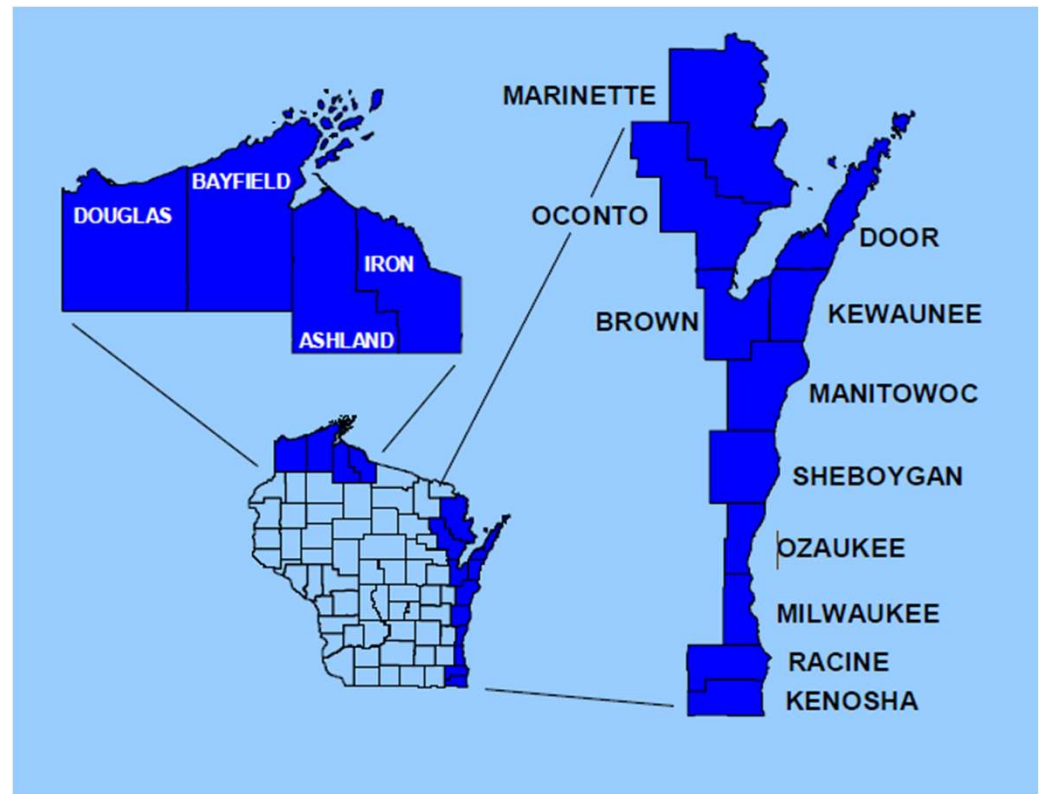
CZMA State Participation

- ▶ State participation is voluntary
- ▶ States need to address goals, program areas, geographic boundaries, and policies for managing land and water uses
- ▶ States
 - ▶ Develop and implement programs that are approved by NOAA
 - ▶ Draft annual award applications for implementation
 - ▶ Receive and manage funding
 - ▶ Report to NOAA twice a year and coordinate regular program reviews
- ▶ NOAA
 - ▶ Provides financial assistance to states
 - ▶ Provides technical assistance
 - ▶ Reviews reporting, program changes, strategies, implementation
 - ▶ Conducts program reviews



Wisconsin Coastal Management Program (WCMP)

- ▶ Approved in 1978 (first in the Great Lakes)
- ▶ Includes the 15 counties along Lake Superior and Lake Michigan (nearly 1000 miles of shoreline) - boundaries are the county line and the state line
- ▶ Governor-appointed Council
- ▶ A “networked” program
- ▶ Annual publication “Wisconsin Great Lakes Chronicle”



WCMP

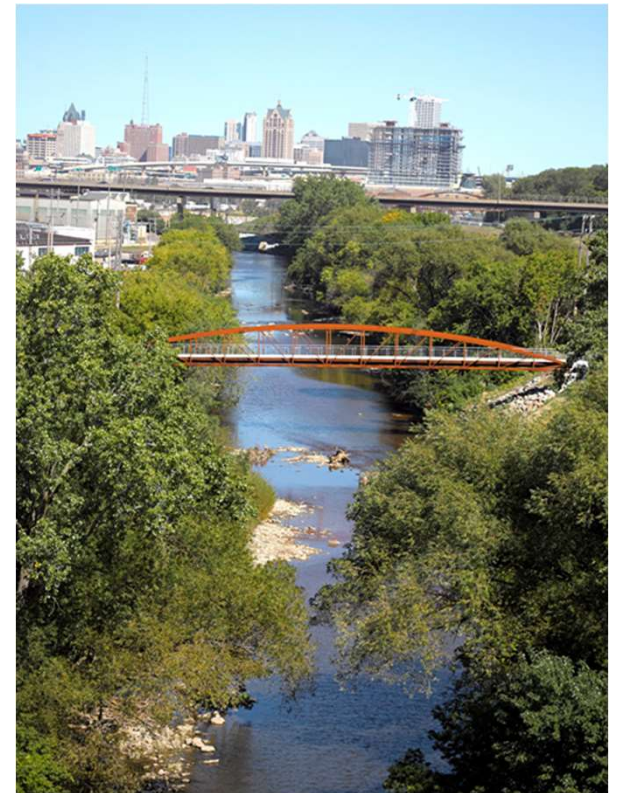
Program objectives:

- ▶ To improve the implementation and enforcement of existing state regulatory and management policies and programs affecting key coastal uses and areas;
- ▶ To improve the coordination of existing policies and activities of governmental units and planning agencies on matters affecting key coastal uses and areas;
- ▶ To strengthen local governmental capabilities to initiate and continue effective coastal management consistent with identified state standards and criteria;
- ▶ To provide a strong voice to advocate the wise and balanced use of the coastal environment and the recognition in federal, state, and local policies of the uniqueness of the coastal environment; and
- ▶ To increase public awareness and opportunity for citizens to participate in decisions affecting the Great Lakes resources.



Guiding Principle

Enjoy and Protect
Wisconsin's Great Lakes
Coastal Resources



Grant Program Areas



Wetland Protection and Habitat Restoration



Nonpoint Source Pollution Control



Coastal Resources and Community Planning



Great Lakes Education



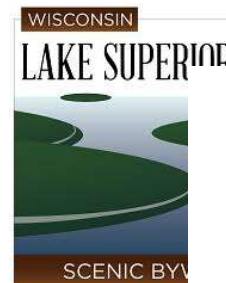
Public Access and Historic Preservation

State, Regional, National and International Initiatives

- ▶ Coastal States Stewardship Foundation Board
- ▶ Former Chair and Ex Comm of Coastal States Organization
- ▶ National Working Waterfront Network Ex Comm
- ▶ Co-Chair Great Lakes Regional Maritime Entity
- ▶ Wisconsin Coastal Hazards Work Group
- ▶ University of Wisconsin Sea Grant Advisory Board
- ▶ Department of Transportation Harbor Advisory Board
- ▶ Wisconsin Harbor Towns Association
- ▶ Wisconsin Marine Association
- ▶ Lake Superior NERR Advisory Board
- ▶ Wisconsin Coastal Beaches Working Group
- ▶ Great Lakes Beach Association
- ▶ Wisconsin Clean Marina Program
- ▶ Great Lakes Clean Marina Network
- ▶ Great Lakes Water Safety Consortium
- ▶ Wisconsin Hazard Mitigation Team



Wisconsin
COMMERCIAL PORTS ASSOCIATION



GREAT LAKES
ST. LAWRENCE
GOVERNORS
& PREMIERS



NWRPC
Keeping Your Future As Our Focus



Coastal Actions for Resilience and Economic Security (CARES) of Southeastern Wisconsin Bluff, Beach, and Infrastructure Assets

NOAA REGIONAL COASTAL RESILIENCY PROGRAM

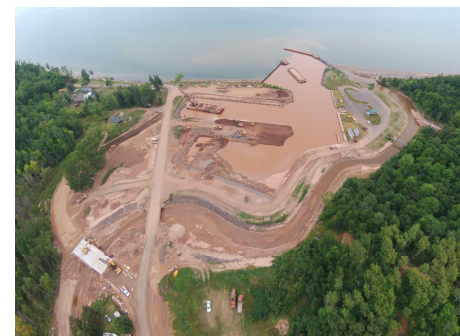


8



Wisconsin Coastal Management Data Infrastructure

- ▶ The Wisconsin Coastal Management Project of Special Merit is focused on providing data, tools, and training to Lake Superior coastal communities in Wisconsin. The project is starting by focusing on the Lake Superior region and tackling one of the key issues impacting communities in that region: culverts.
- ▶ As rain events become more frequent and intense, so does the damage to culverts. Through inventory and mapping, at-risk culverts can be identified and upgraded replacements can be justified. This project aims to provide the resources needed for coastal and culvert managers to quickly and appropriately respond to damages or identify vulnerable culverts before catastrophe.



Slide 9

MF1

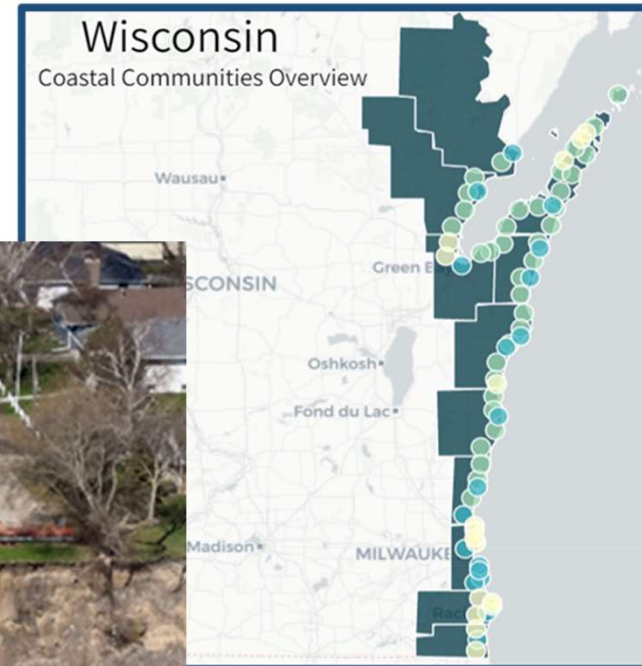
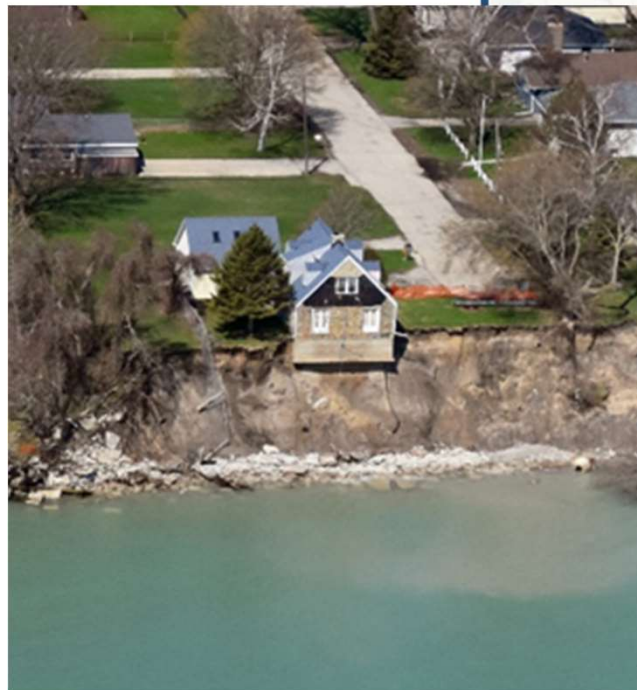
Michael Friis, 3/1/2021

Collaborative Action for Lake Michigan (CALM) Coastal Resilience

- ▶ Prospective Wisconsin Coastal Management Project of Special Merit
- ▶ Fluctuating lake levels present unique hazards at both high and low levels
- ▶ Focused on expanding coordination efforts among agencies, organizations, and local governments to assist them in developing and revising coastal hazard policies through outreach and data development and management.
- ▶ Would leverage opportunities to:
 - ▶ share lessons learned
 - ▶ promote decision support tools
 - ▶ support ongoing local and regional efforts
 - ▶ build on the work of WICDI

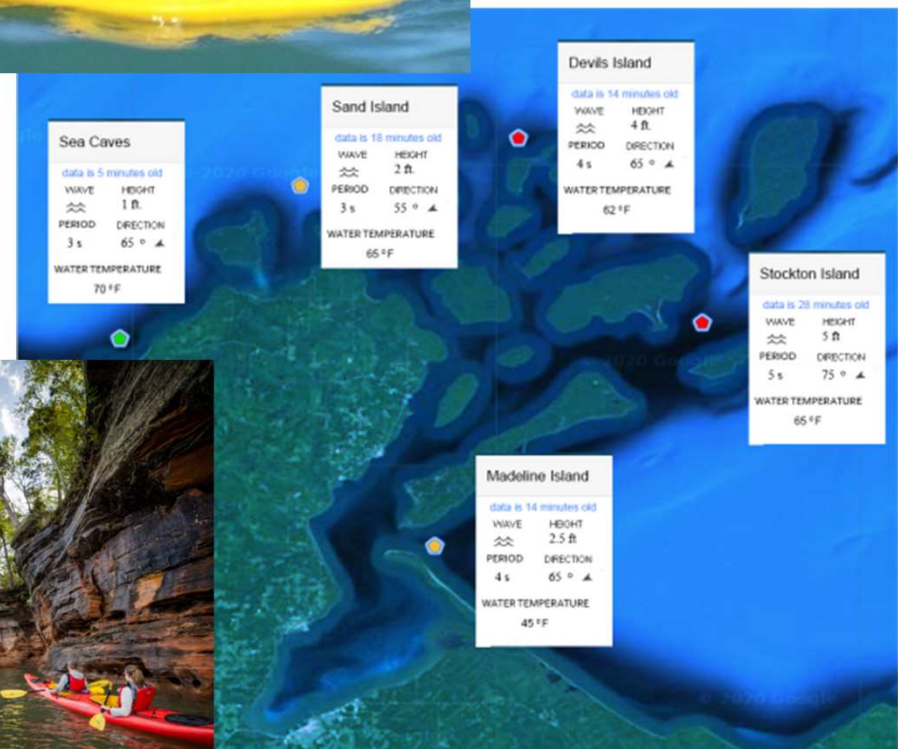


10



Water Information for a Safe Coast (WISC) Watch for the Apostle Islands

- ▶ Develop and implement a real-time wave, temperature, and wind buoy network to provide kayakers, boaters, and park managers with dynamic water information to improve safety.
- ▶ Wave monitoring buoys have been deployed at seven locations throughout the Apostle Islands.
- ▶ Information will be collected through interviews and surveys of outfitters, paddlers, boaters and the public on WISC-Watch and safety.
- ▶ Collaboration between UW Madison Department of Civil and Environmental Engineering, Wisconsin Coastal Management Program, UW Sea Grant, National Park Service, Wisconsin Department of Tourism and many others.



Great Lakes Regional Maritime Entity

Priorities for 2021-22

- ▶ Grow trade with Western Europe through strategic partnership with the Port of Antwerp in Belgium
- ▶ Launch maritime Five-Year Action Plan focused on priority areas like infrastructure, cruising, and smart shipping
- ▶ Green Shipping Action Plan: Improve regional environmental performance, building on recommendations from Green Marine report
- ▶ Build smart shipping road map and develop pilot projects
 - ▶ Steel/taconite supply chain analysis by Axia Institute (Michigan State University)
- ▶ Advocate with the federal governments on priority issues such as Soo Locks funding

GREAT LAKES
ST. LAWRENCE
GOVERNORS
& PREMIERS



NOAA

Coast Survey

- ▶ In Lake Superior we are working to wrap up benthic mapping off of the west side of the Bayfield Peninsula.
- ▶ In Lake Michigan NOAA OCS has contracted out for new bathymetry data collection in Green Bay and mid-Lake Michigan.

Office for Coastal Management/Great Lakes Cities

- ▶ Coastal Resilience Initiative



Thank You

Mike Friis

Wisconsin Coastal Management Program

Department of Administration

Michael.Friis@wisconsin.gov

<http://Coastal.Wisconsin.gov>

