

*Find yourself next to the water.*

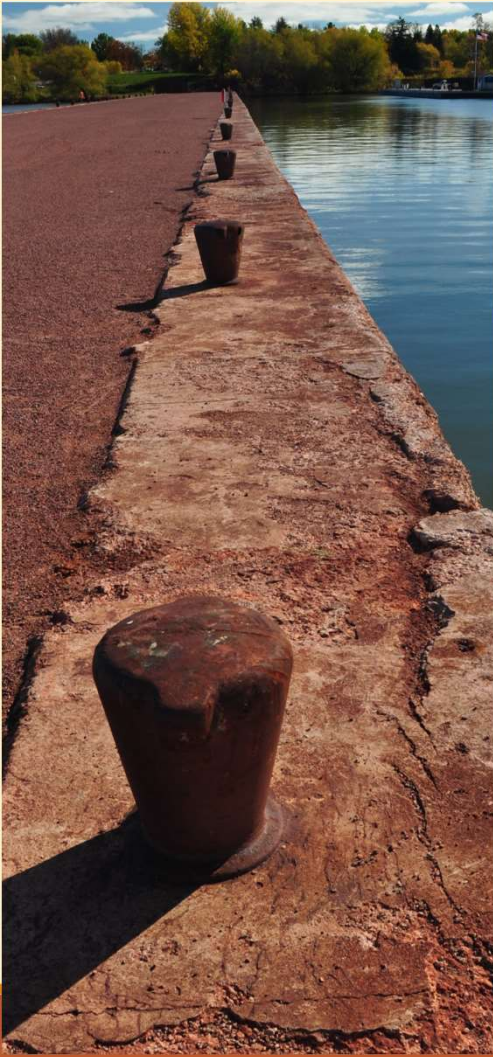


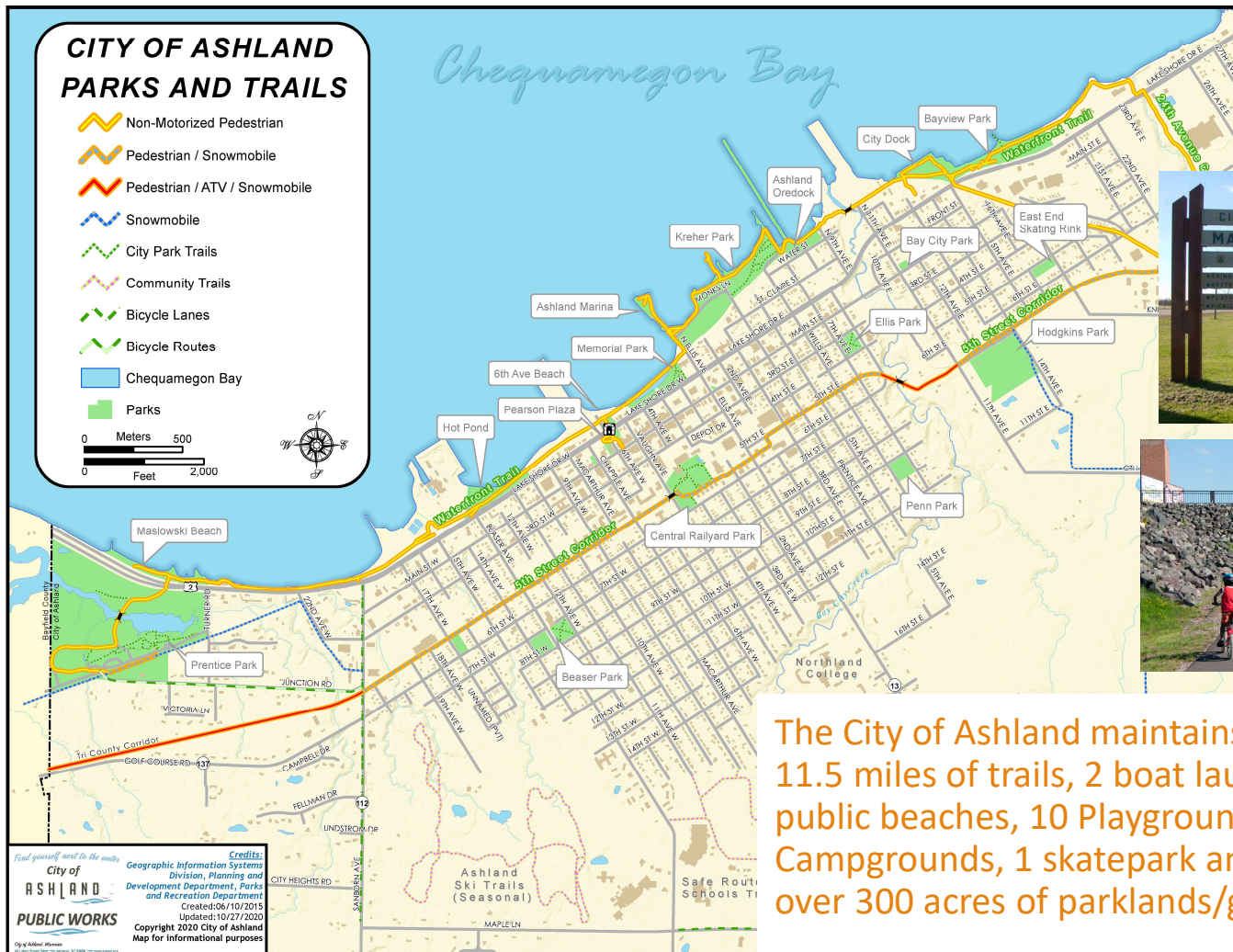
*City of Ashland, Wisconsin*

## The City of Ashland, Wisconsin

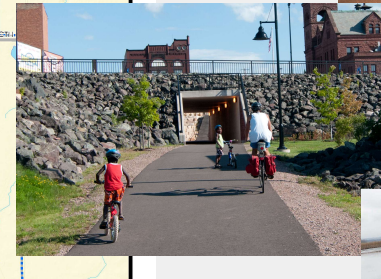
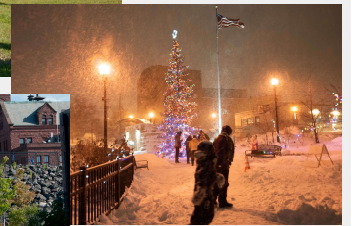
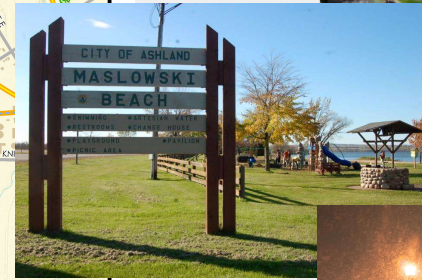
**Mission:** Always Promote the Betterment of Ashland

**Vision :** A thriving community that values its natural environment, rich history, unique and diverse cultures, way of life and stewardship to Lake Superior.





The City of Ashland maintains 22 Parks, 11.5 miles of trails, 2 boat launches, 4 public beaches, 10 Playgrounds, 2 Campgrounds, 1 skatepark and owns over 300 acres of parklands/green space

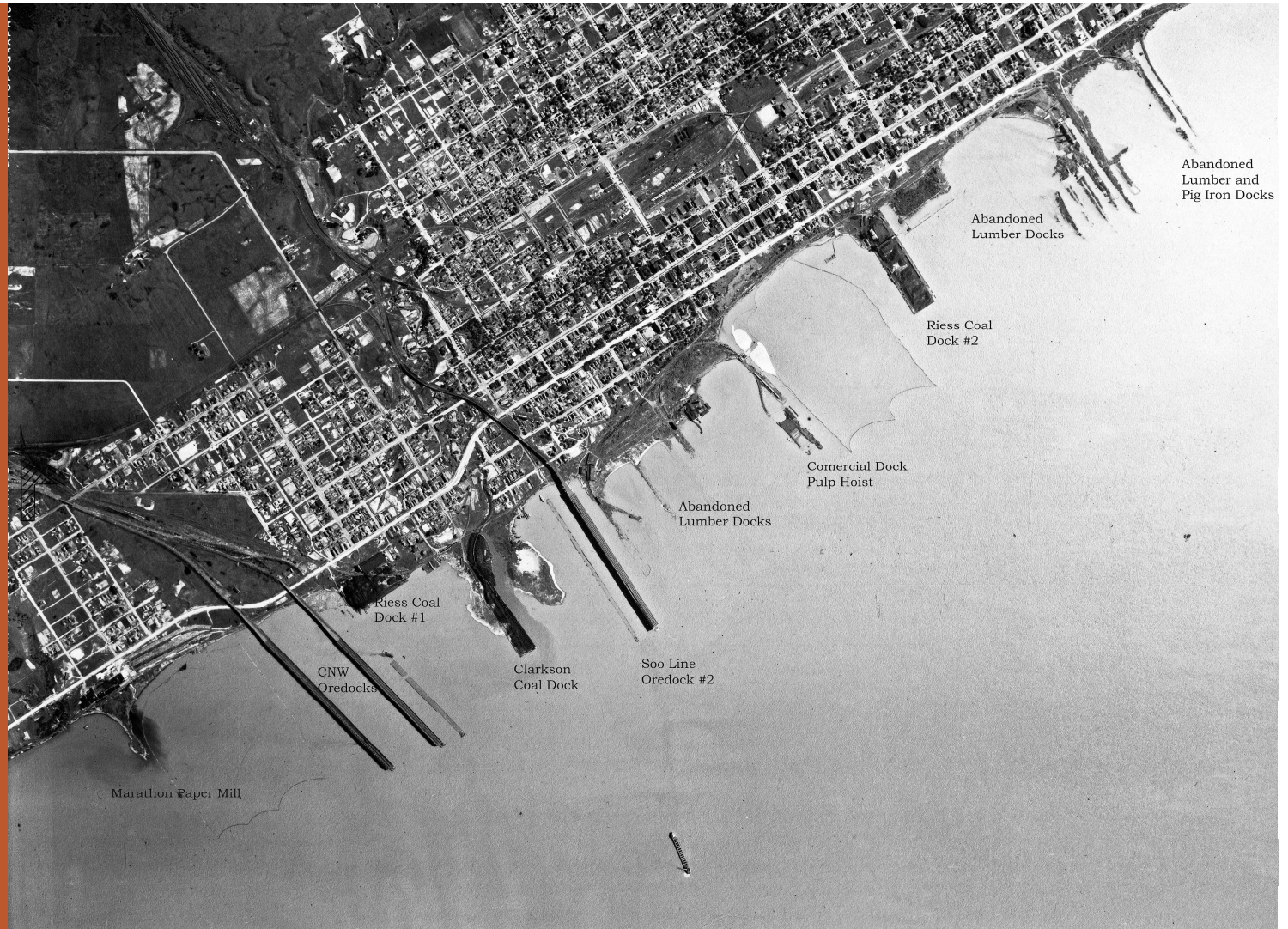




Lake  
Superior  
Shoreline

City of  
Ashland's  
Industrial  
Waterfront

Ashland, WI  
Circa 1930





# Ashland Oredock Redevelopment Project

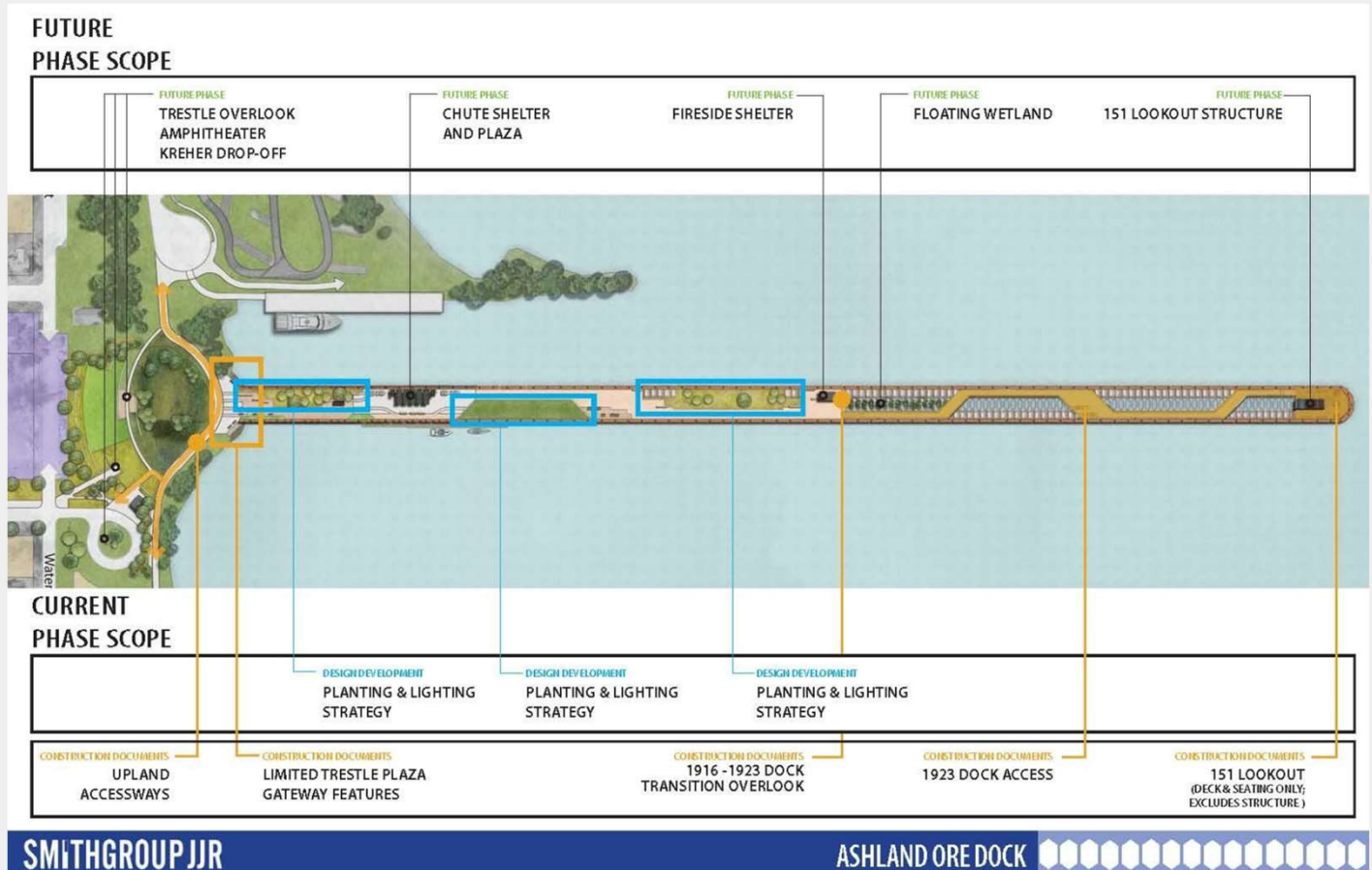
Development Phases:  
Diamond Access  
Stuntz Ave Connector  
Upland Redevelopment  
1916 Gathering Space





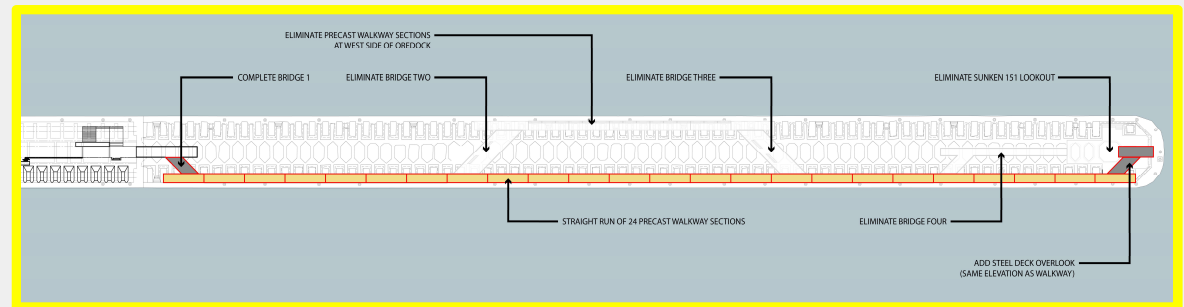
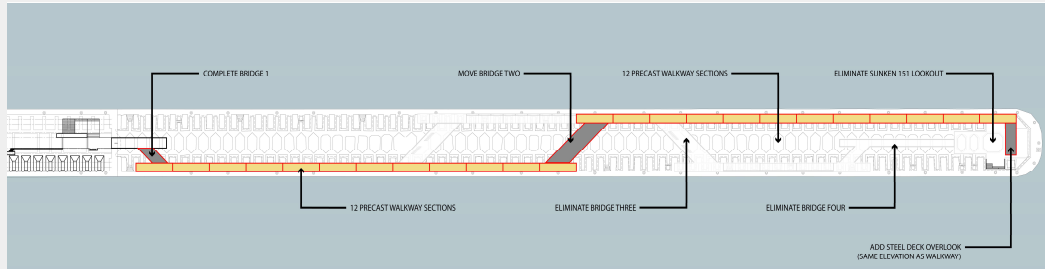


# Ashland Oredock Concept Design 2016









# Ashland Oredock: Diamond Access

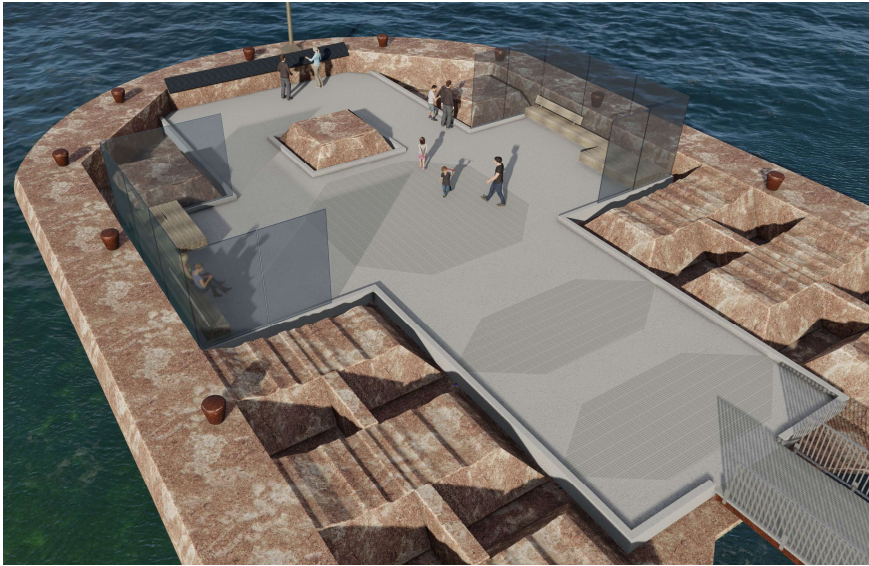
# 151 Lookout (Transition of 1916 to the 1923 Section)



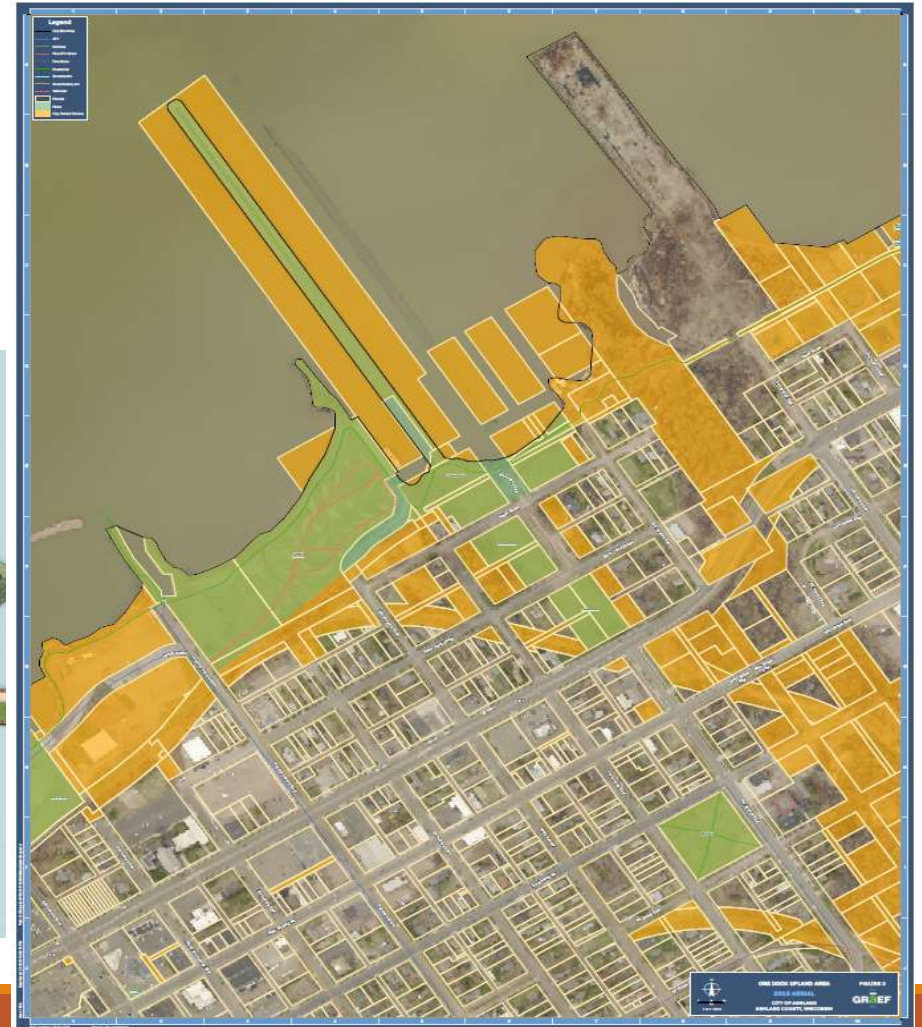


# Ashland Oredock Terminus

---

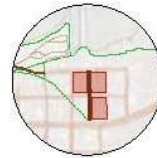
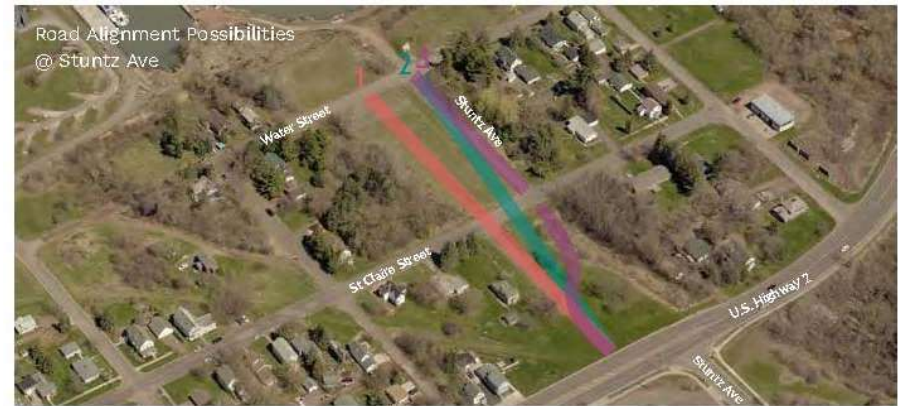


# Ashland Oredock Upland Development





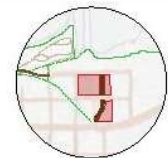
# Stuntz Ave Connector



**Road Alignment 1:** Stuntz Avenue becomes a new road running parallel to the current street grid, offset to the West from the original alignment.



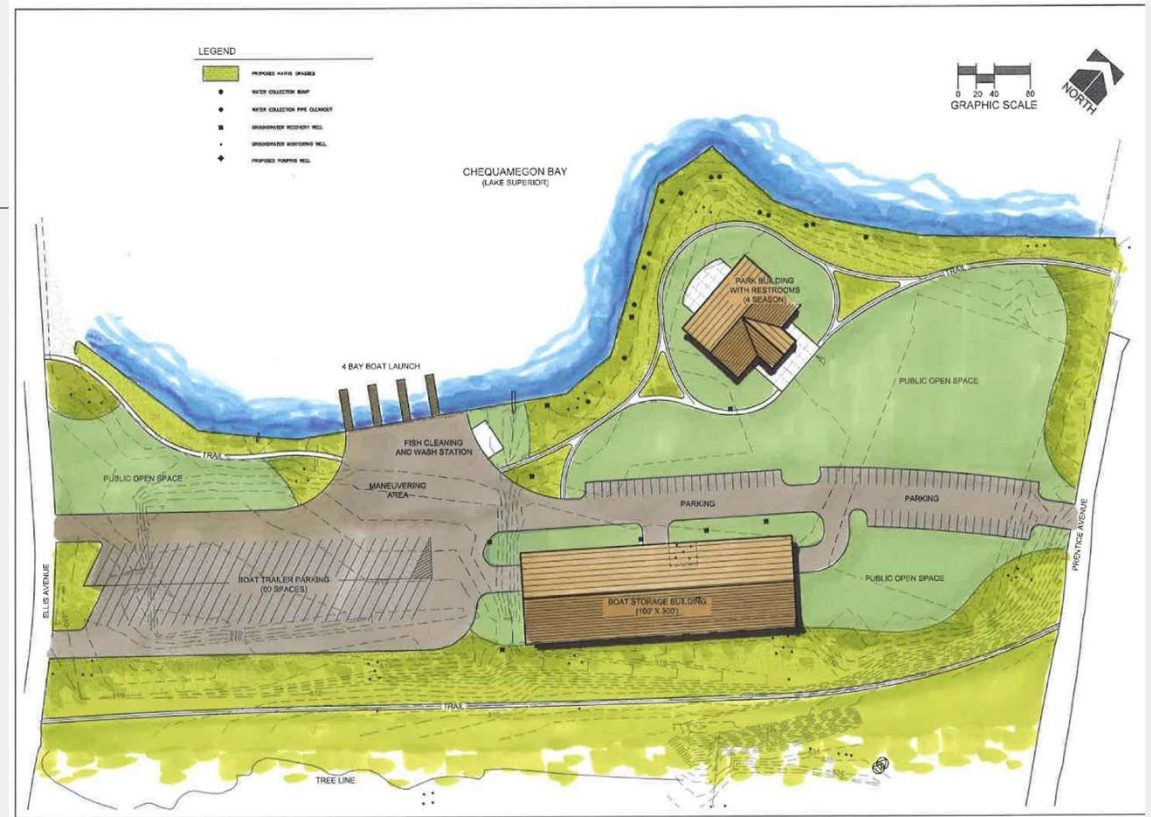
**Road Alignment 2:** Stuntz Avenue angles southwest from Water Street to intersect with U.S. Highway 2.



**Road Alignment 3:** Stuntz Avenue remains in its current position close to the lake, but connects to U.S. Highway 2 in an "S" curve formation from St. Claire St.

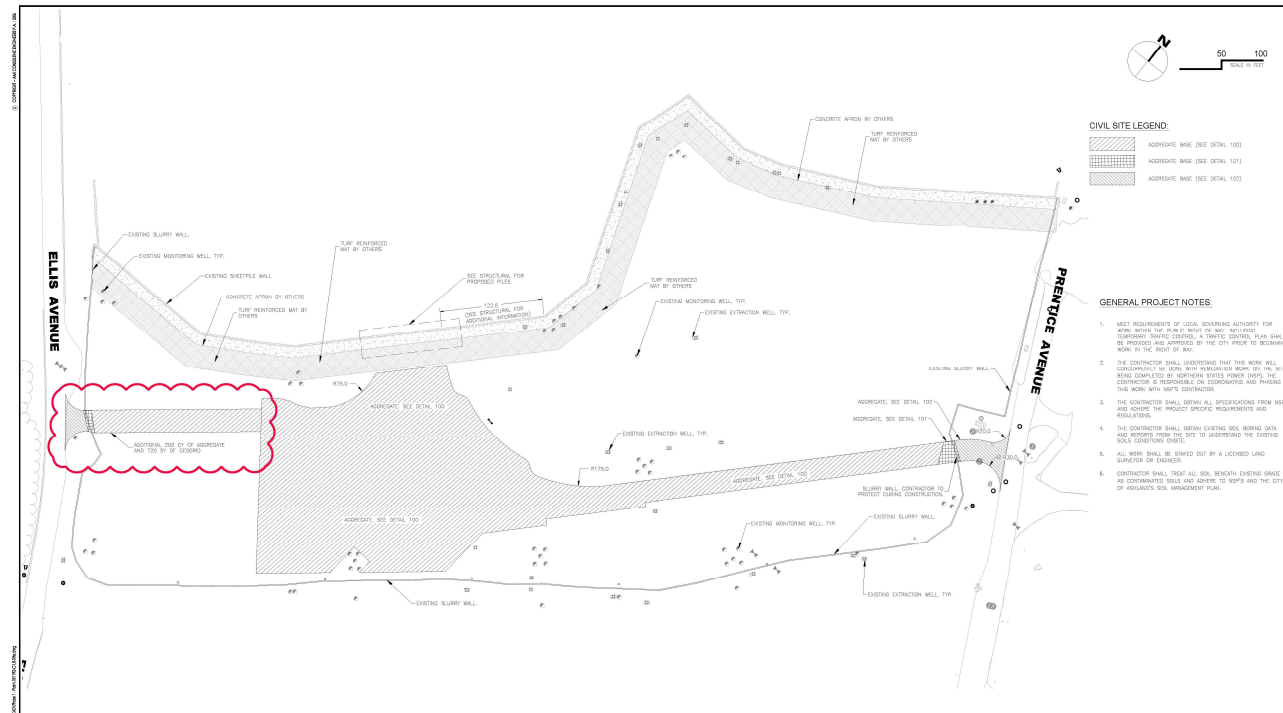
# Kreher Park Redevelopment

The Former Ashland/NSP  
Lakefront Superfun(d) Site











# Thank You

Sara Hudson, Director

[shudson@coawi.org](mailto:shudson@coawi.org)

715.685.1644



CITY OF ASHLAND  
PARKS & RECREATION

FIND YOURSELF BY THE WATER



Photo Credits: Ed Monroe, Don “Ocky” Jaskowiak, and the Ashland Historical Museum